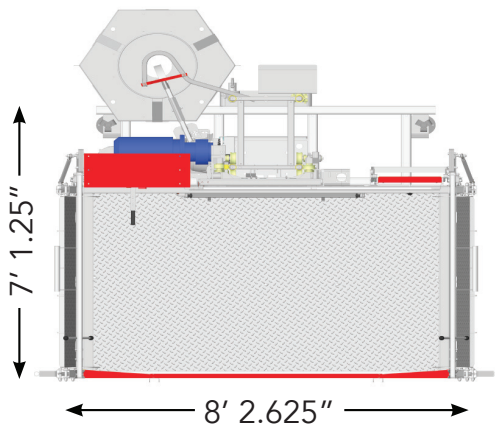
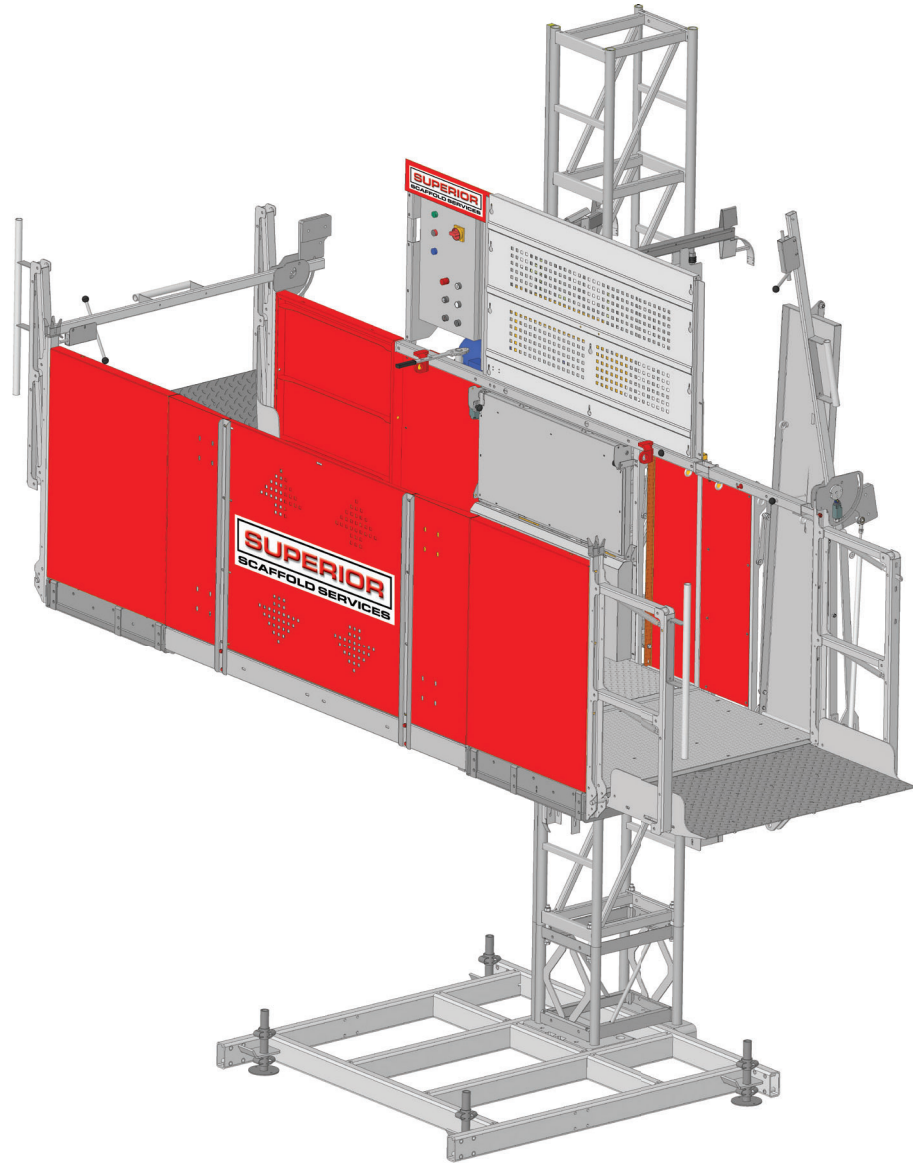


TRANSPORT PLATFORM & MATERIAL HOIST

TP 2500

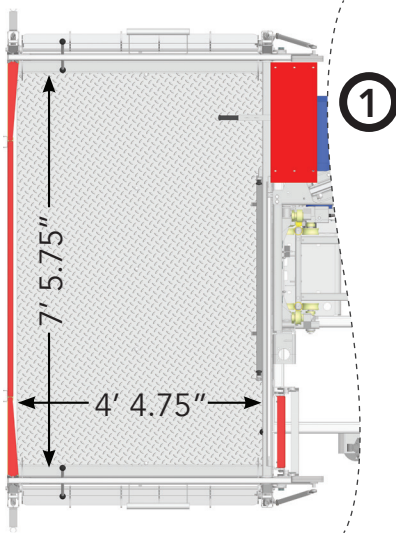
FEATURES

- Cheaper than an elevator and can have MORE capacity
- Variety of car sizes (See side 2)
- Variable speeds and configurations
- Soft start and stop feature protects payload
- Wide opening gates facilitate efficient loading/unloading of large/heavy material (i.e. 12 ft. sheets of drywall)
- No crane needed for installation
- Small footprint



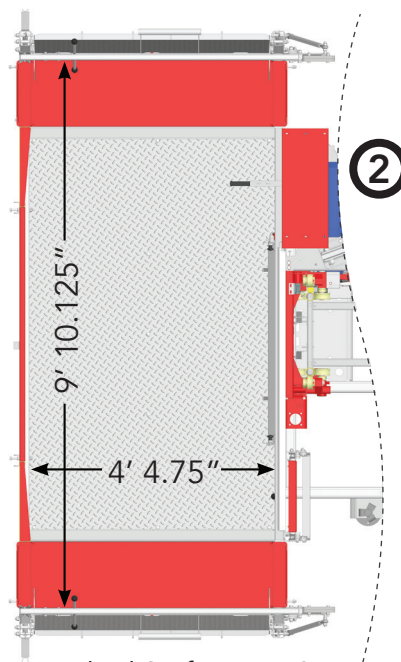
Lift Capacity	5070 lbs
Lift Speed	39 FPM (personnel mode) / 65 FPM (materials mode)
A/C Power	1Φ 220v / 3Φ 208v
Maximum Height	525 Ft.

3 FLEXIBLE CAR CONFIGURATIONS



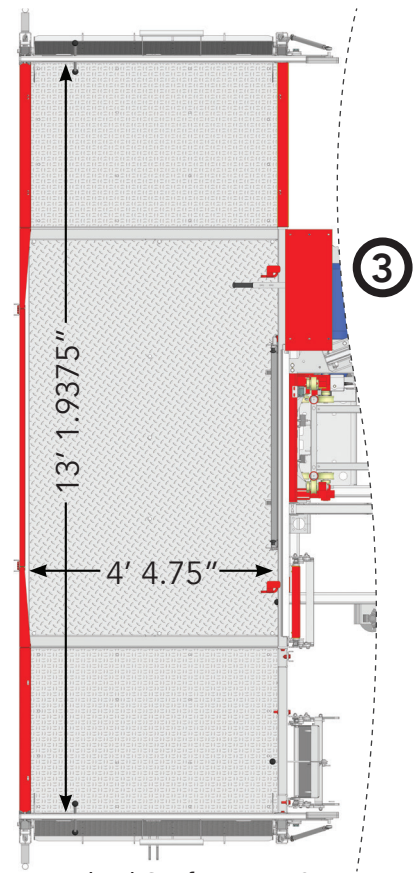
Payload Configuration 1

Materials Only	5070 lbs
+1 Person	+4850 lbs
+2 People	+4629 lbs
+3 People	+4409 lbs
+4 People	+4188 lbs
+5 People	+3968 lbs
+6 People	+3747 lbs
+7 People	+3527 lbs



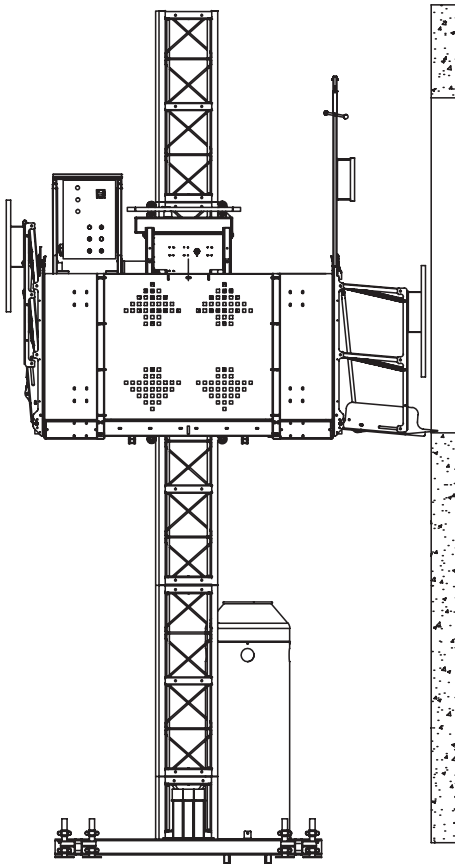
Payload Configuration 2

Materials Only	4409 lbs
+1 Person	+4188 lbs
+2 People	+3968 lbs
+3 People	+3747 lbs
+4 People	+3527 lbs
+5 People	+3306 lbs
+6 People	+3086 lbs
+7 People	+2866 lbs

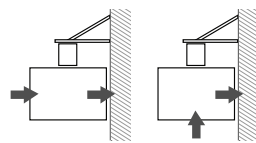


Payload Configuration 3

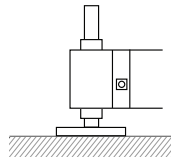
Materials Only	3306 lbs
+1 Person	+3086 lbs
+2 People	+2866 lbs
+3 People	+2645 lbs
+4 People	+2425 lbs
+5 People	+2204 lbs
+6 People	+1984 lbs
+7 People	+1763 lbs



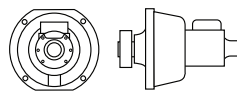
Full Transport Platform



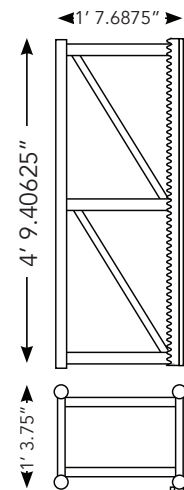
Possible Access Configuration



Four Leveling Screw-Jacks



Overspeed Safety Device with Progressive Stop



Interchangeability