

# SUPERIOR

SCAFFOLD SERVICES

POWERED  
ACCESS  
DIVISION



MACHINERY FOR EVERY TRADE AND PROJECT

215.743.2200  
[www.superiorscaffold.com](http://www.superiorscaffold.com)  
600 Center Avenue | Bensalem, PA 19020

**SUPERIOR**  
SCAFFOLD SERVICES



# TRANSPORT PLATFORMS

COST EFFECTIVE TRANSPORT FOR MULTIPLE TRADES



Built for safely lifting material and authorized personnel both inside and outside of buildings.

Versatile, dual purpose, rack and pinion transport platforms designed for heights up to 525 ft.



Modular design allows our transport platforms to be adapted to customer's needs.





Offers a variety of car sizes, loading capacities (up to 8,000lbs), and variable speed configurations from 29.9 to 80 FPM.



## FEATURES & BENEFITS

**Affordable:** Less expensive than a construction elevator and can have MORE capacity.

**Modular Design:** Can be adapted to your needs with a variety of car sizes and loading capacities.

**Load Capacity:** Depending on unit and configuration can carry 1,800 – 8,000 lbs.

**Variable Speed:** Configurations from 29.9 FPM to 80 FPM.

**Certified:** Meets manufacturer's required standards.

**Multiple Trades:** Masonry and windows, HVAC, steel, electrical and more.

**Wide Gate Openings:** Facilitate efficient loading/unloading of large/heavy material (12 ft. sheets of drywall, windows, bricks, etc).

**Multiple Accessories:** Many available accessories and options.

**Small Footprint:** No crane needed for installation and base is compact and maneuverable.

**Support:** Our sales are backed up by unprecedented support. Providing in-house and on-site repair and support.

# TRANSPORT PLATFORM

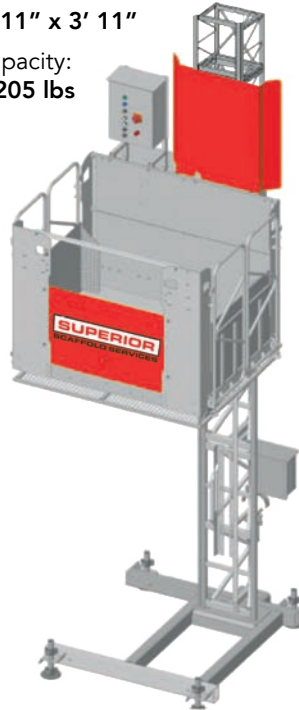
## TP 1760

### FEATURES

- Less expensive to install and rent than a construction elevator.
- Variety of car sizes (see next page)
- Variable speeds and configurations
- Soft start and stop feature protects payload
- Wide opening gates facilitate efficient loading/unloading of large/heavy machinery
- No crane needed for installation
- Small footprint
- Roofs available
- Automatic rack grease pump saves time and money

① ②

Dimensions:  
① 4' 4" x 3' 4"  
② 4' 11" x 3' 11"  
Capacity:  
2,205 lbs



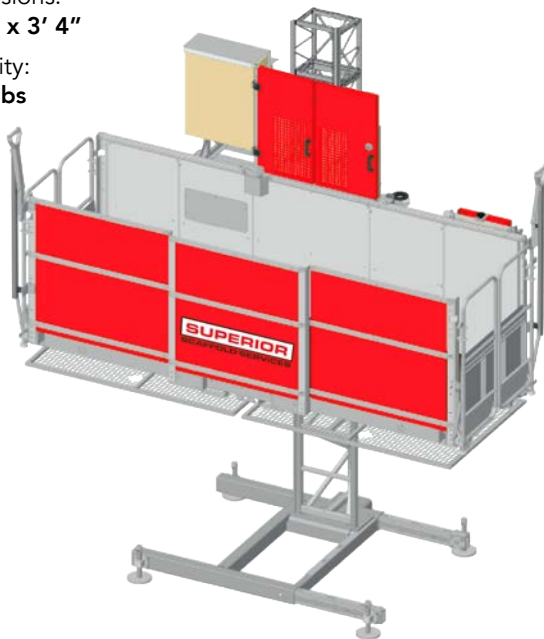
③

Dimensions:  
6' 7" x 4' 7"  
Capacity:  
1,763lbs



④

Dimensions:  
10' 5" x 3' 4"  
Capacity:  
1,763lbs

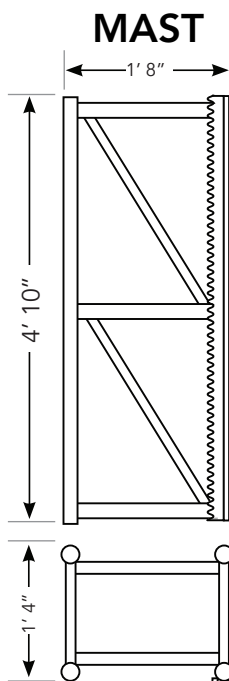
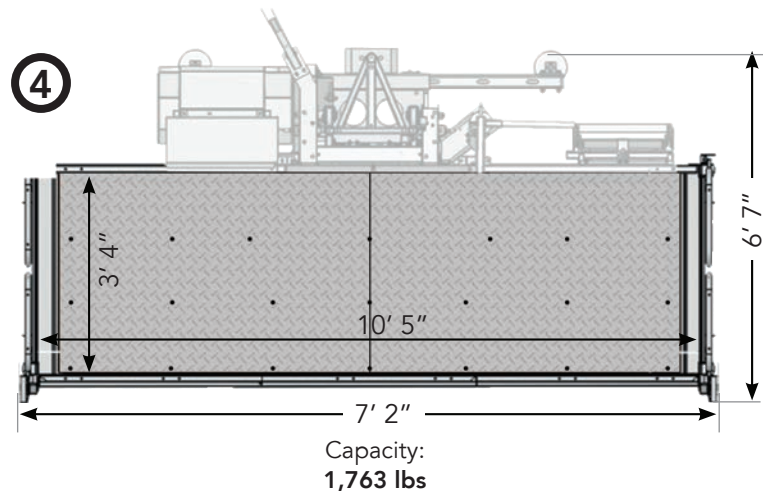
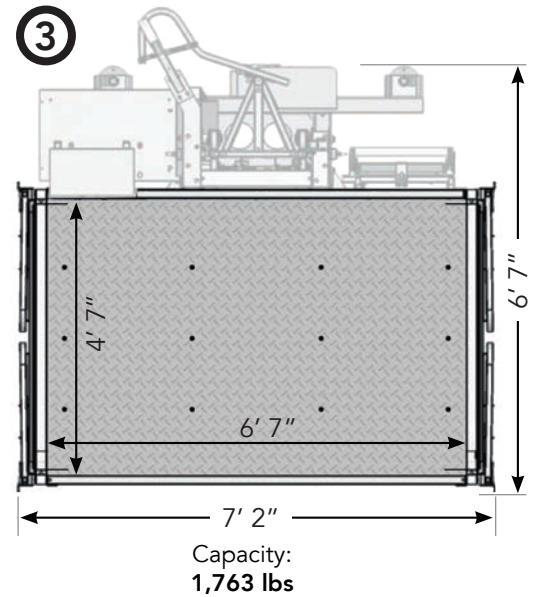
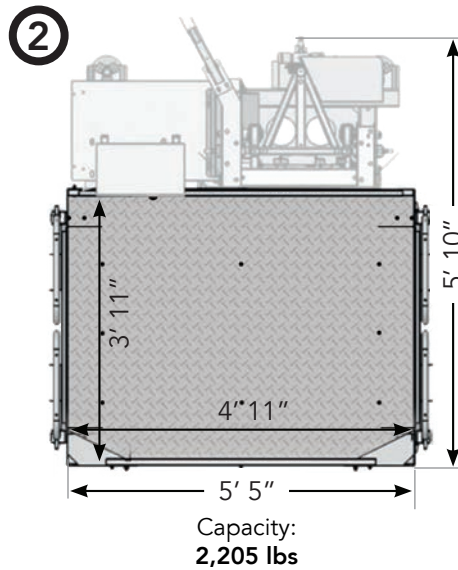
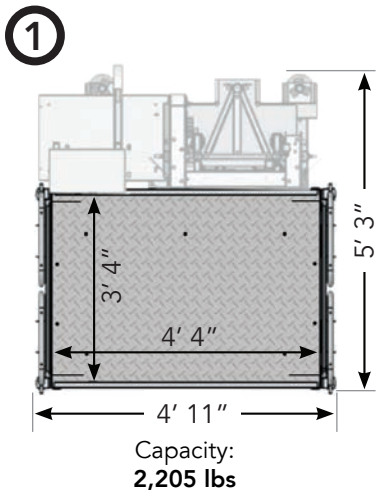


### SPECIFICATIONS

Configurations	① ②	③ ④
Capacity	2,205lbs	1,763lbs
Lifting Speed	35 ft./min.	
Max Anchored Height	525 ft.	
Platform Dimensions	① 4' 4" x 3' 4" ② 4' 11" x 3' 11"	③ 6' 7" x 4' 7" ④ 10' 5" x 3' 4"
Input Power Range	1Φ 220v / 230v	
Protection Switch	16 A	
Motor Power	1 x 2.2kW	
Minimum Line Power (suggested)	3kW	
Features	Anti-crushing grille, Automatic rack greasing pump	



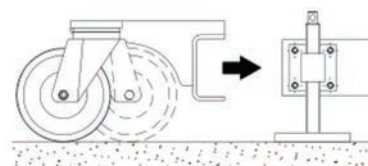
# 4 INTERCHANGEABLE CAGE CONFIGURATIONS



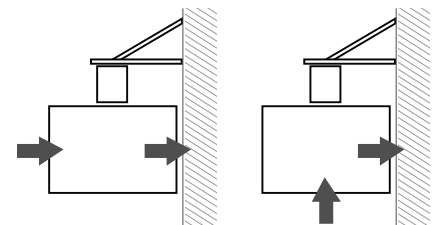
Weight per Section  
105.82 lbs

Also available with triangular mast

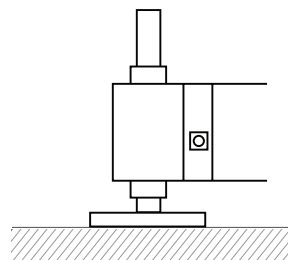
## FEATURES



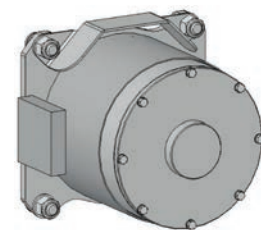
Rotating Wheel Kit  
for quick positioning



Possible Access Configurations



Four Leveling Screw-Jacks



Safety Brake System

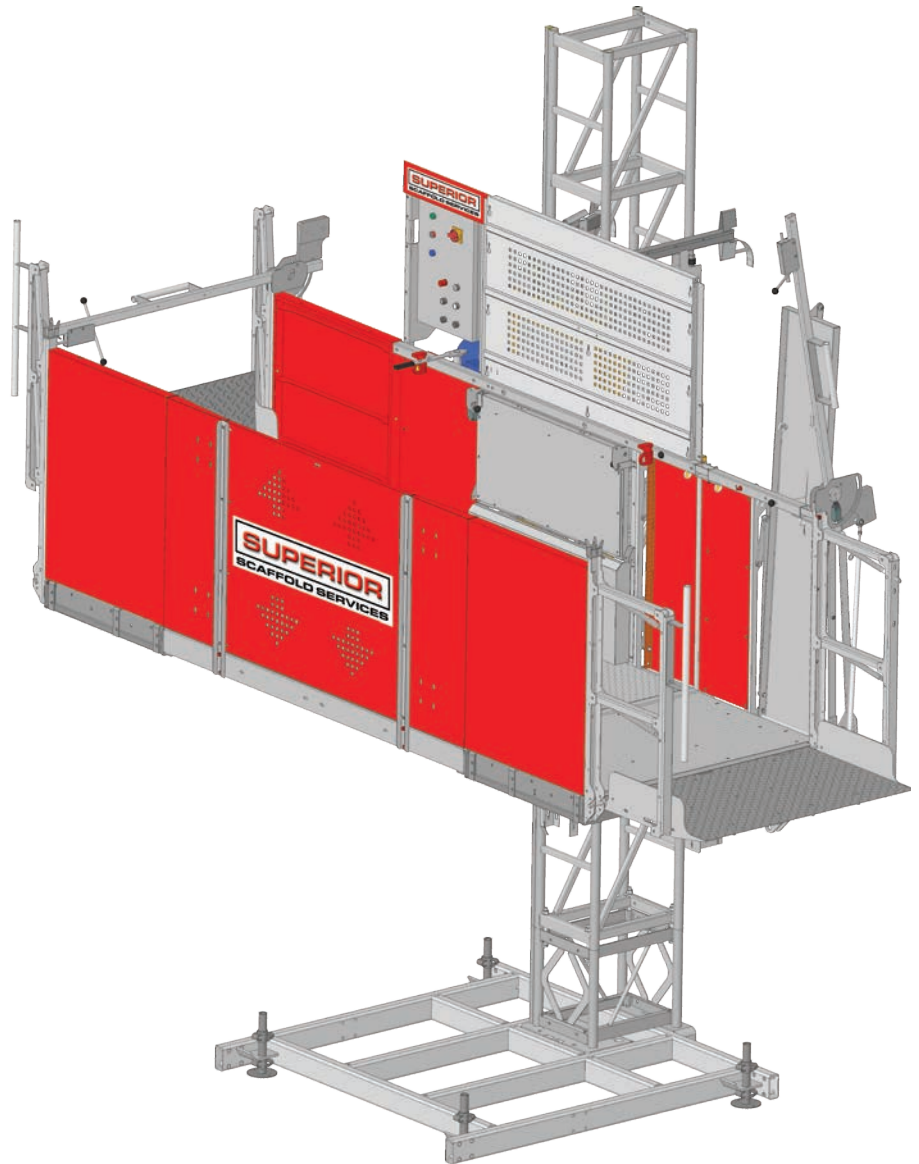
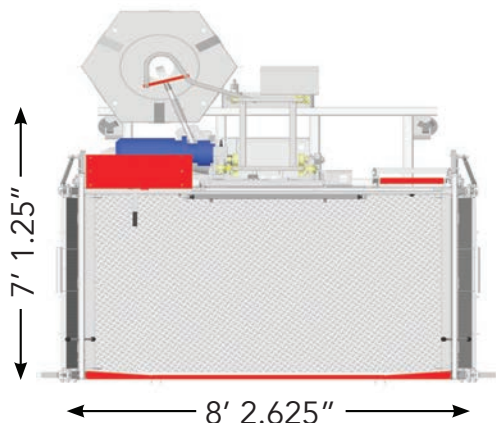


# TRANSPORT PLATFORM

## TP 2500

### FEATURES

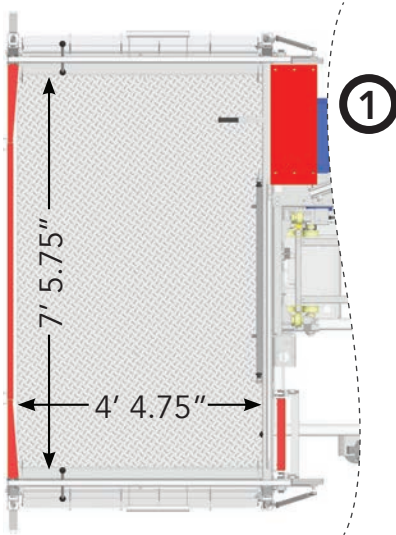
- Less expensive to install and rent than a construction elevator and can have MORE capacity
- Variety of car sizes (see next page)
- Variable speeds and configurations
- Soft start and stop feature protects payload
- Wide opening gates facilitate efficient loading/unloading of large/heavy material (i.e. 12 ft. sheets of drywall)
- No crane needed for installation
- Small footprint
- Roofs available
- Automatic rack grease pump saves time and money



Lift Capacity	5070 lbs
Lift Speed	39 FPM (personnel mode) / 65 FPM (materials mode)
A/C Power	1Φ 220v / 3Φ 208v
Maximum Height	525 Ft.

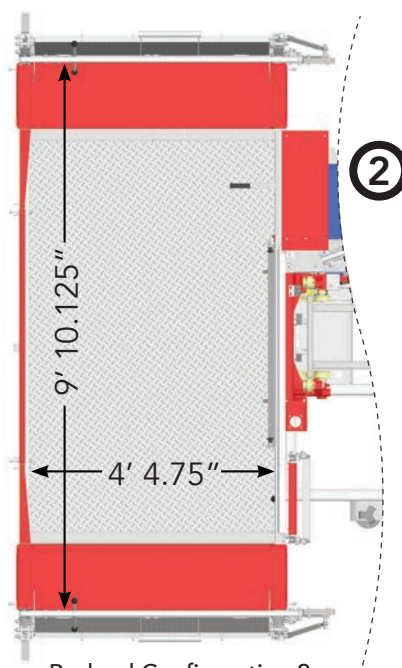


# 3 FLEXIBLE CAR CONFIGURATIONS



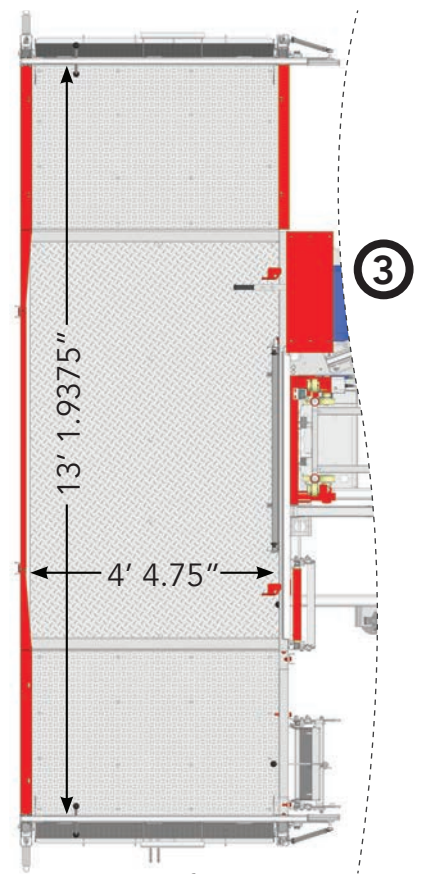
**Payload Configuration 1**

Materials Only	5070 lbs
+1 Person	+4850 lbs
+2 People	+4629 lbs
+3 People	+4409 lbs
+4 People	+4188 lbs
+5 People	+3968 lbs
+6 People	+3747 lbs
+7 People	+3527 lbs



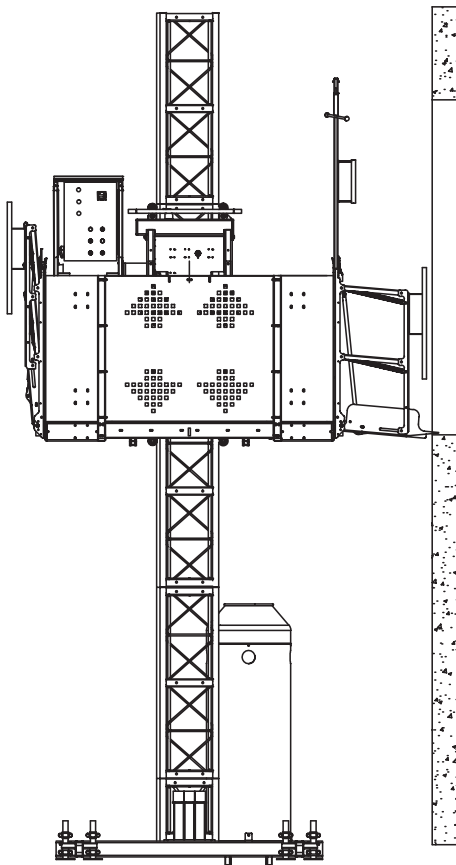
**Payload Configuration 2**

Materials Only	4409 lbs
+1 Person	+4188 lbs
+2 People	+3968 lbs
+3 People	+3747 lbs
+4 People	+3527 lbs
+5 People	+3306 lbs
+6 People	+3086 lbs
+7 People	+2866 lbs

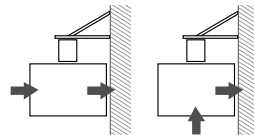


**Payload Configuration 3**

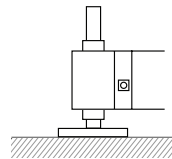
Materials Only	3306 lbs
+1 Person	+3086 lbs
+2 People	+2866 lbs
+3 People	+2645 lbs
+4 People	+2425 lbs
+5 People	+2204 lbs
+6 People	+1984 lbs
+7 People	+1763 lbs



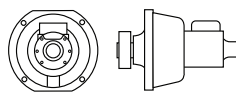
**Full Transport Platform**



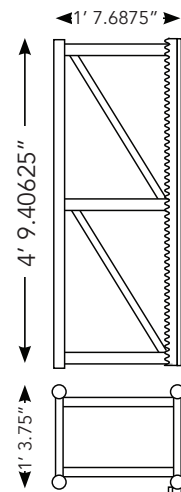
**Possible Access Configuration**



**Four Leveling Screw-Jacks**



**Overspeed Safety Device with Progressive Stop**



**Interchangeability**



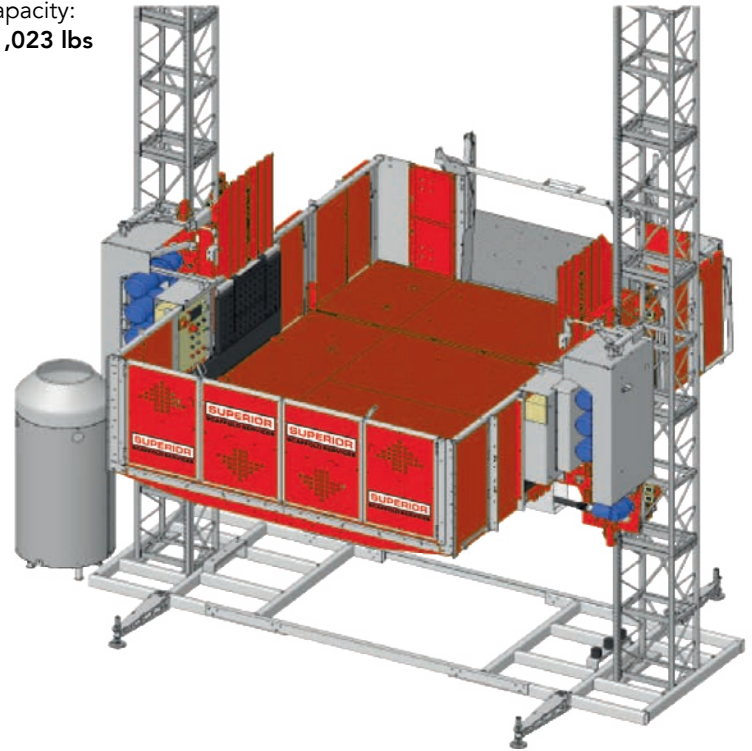
# TP 7700

## HIGHLIGHTS

- Less expensive to install and rent than a construction elevator and can have MORE capacity
- Variety of car sizes (see next page)
- Variable speeds and configurations
- Soft start and stop feature protects payload
- Wide opening gates facilitate efficient loading/unloading of large/heavy machinery
- No crane needed for installation
- Roofs available
- Automatic rack grease pump saves time and money

Dimensions:  
21' 11" x 14' 11"

Capacity:  
11,023 lbs



## SPECIFICATIONS

Usage	People	Material
Max Capacity	11,023 lb	
Lifting Speed	39 ft/min	65/98 ft/min
Max Anchored Height	721 ft.	
Platform Dimensions	① 16' 10" x 7' 9"    ② 16' 10" x 11' 4" ③ 16' 10" x 14' 11"    ④ 16' 10" x 7' 9" ⑤ 21' 11" x 11' 4"	
Input Power Range	1Φ 230/400 V - 50Hz 1Φ 275/480 V - 60Hz	
Protection Switch	50 A	
Motor Power	4 x 5.5 kW	6 x 5.5 kW
Minimum Line Power (suggested)	30 kW	40 kW
Features	Overload system, Automatic rack greasing pump	

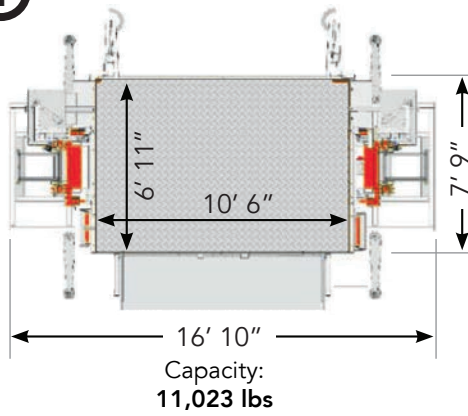
## CAPACITY

Configurations	① ④	② ③ ⑤
Materials Only	11,023 lbs	7,716 lbs
+1 Person	+10,802 lbs	+7,495 lbs
+2 People	+10,583 lbs	+7,275 lbs
+3 People	+10,361 lbs	+7,054 lbs
+4 People	+10,141 lbs	+6,834 lbs
+5 People	+9,920 lbs	+6,613 lbs
+6 People	+9,700 lbs	+6,393 lbs
+7 People	+9,480 lbs	+6,172 lbs
+8 People	+9,260 lbs	+5,952 lbs

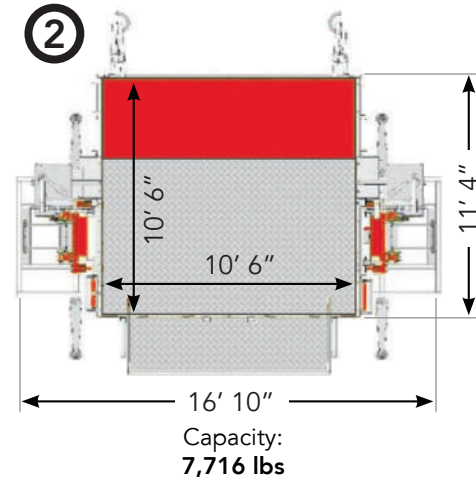


# 5 INTERCHANGEABLE CAGE CONFIGURATIONS

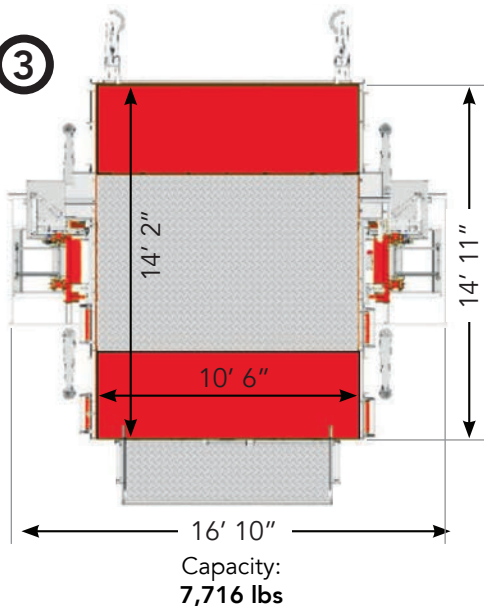
①



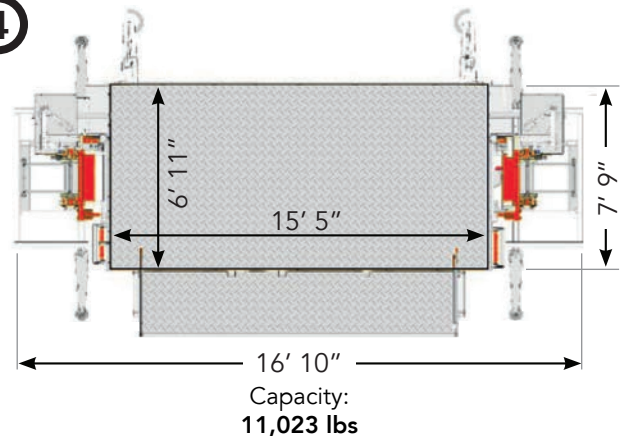
②



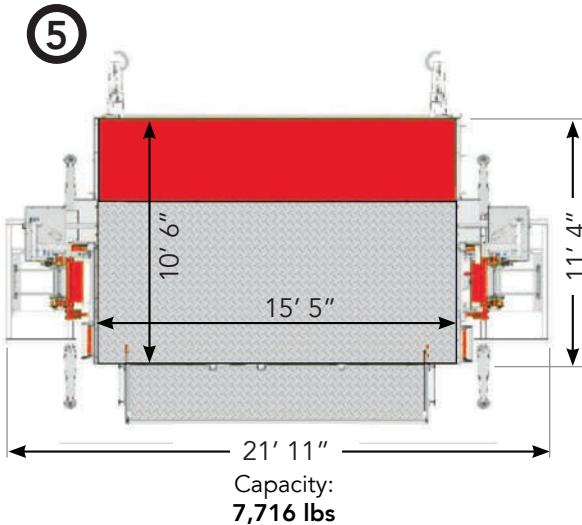
③



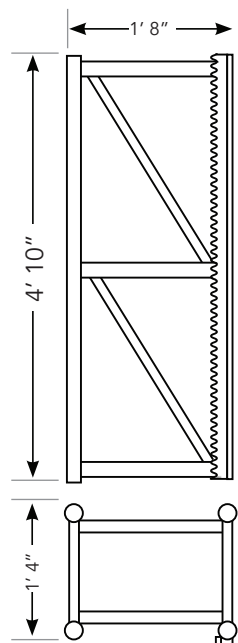
④



⑤

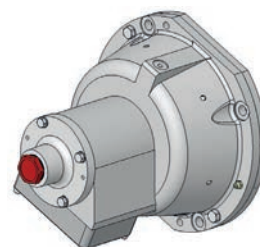


## MAST

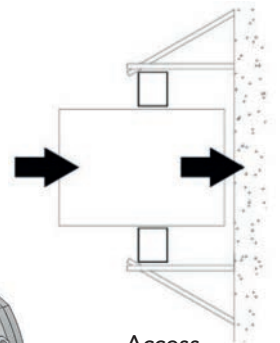


Weight per Section  
105.82 lbs

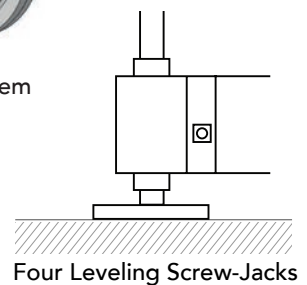
## FEATURES



Safety Brake System



Access  
Configurations



Four Leveling Screw-Jacks



# MAST CLIMBING WORK PLATFORM

ACCESS FOR ALL BUILDING FACADE WORK



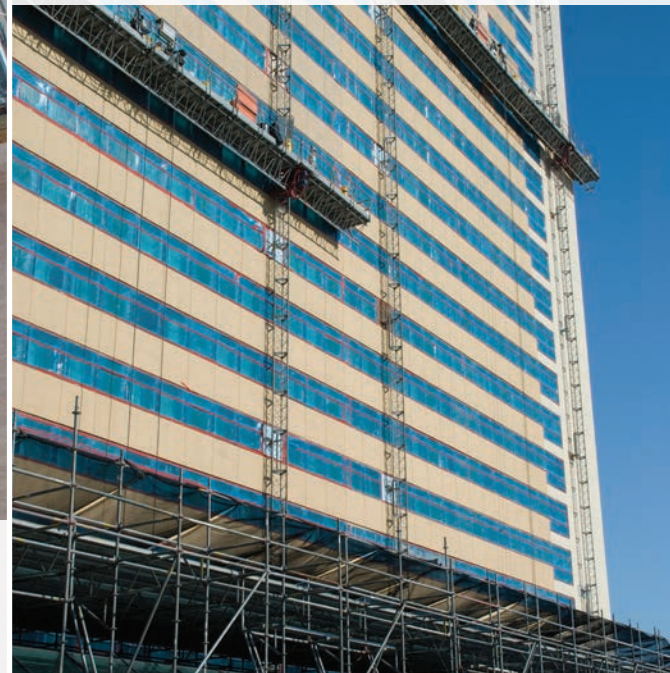
Delivering safe, dependable, high performance vertical access work platforms to multiple trades.



Up to 8 times the capacity of a suspended scaffold.



All units can be configured in single or twin mode depending on the needs of the job.







Ideal for all light, medium and heavy renovation and new construction jobs.



## FEATURES & BENEFITS

**Versatile:** Different units for all types of building facade work. (see each model for your need – Light to heavy construction/renovation).

**Safe:** Delivers safe, dependable, high performance vertical access work platforms to multiple trades.

**Dual configuration:** All units can be configured in single or twin mode depending on the needs of the job.

**Modular:** Adaptable for a variety of configurations and applications. Can extend to lengths of the wall / facade.

**Certified:** Meets manufacturer's required standards.

**Speed:** Lifts at 39 fpm.

**Max Height:** Up to 590 feet.

**Lift capacity:** From 2,000 - 12,000 pounds (2 to 8 times the capacity of a suspended scaffold).

**Managable:** Easy to assemble. Wheelable base unit allows for easy maneuvering and set up.

**Support:** Our sales are backed up by unprecedented support. Providing in-house and on-site repair and support.

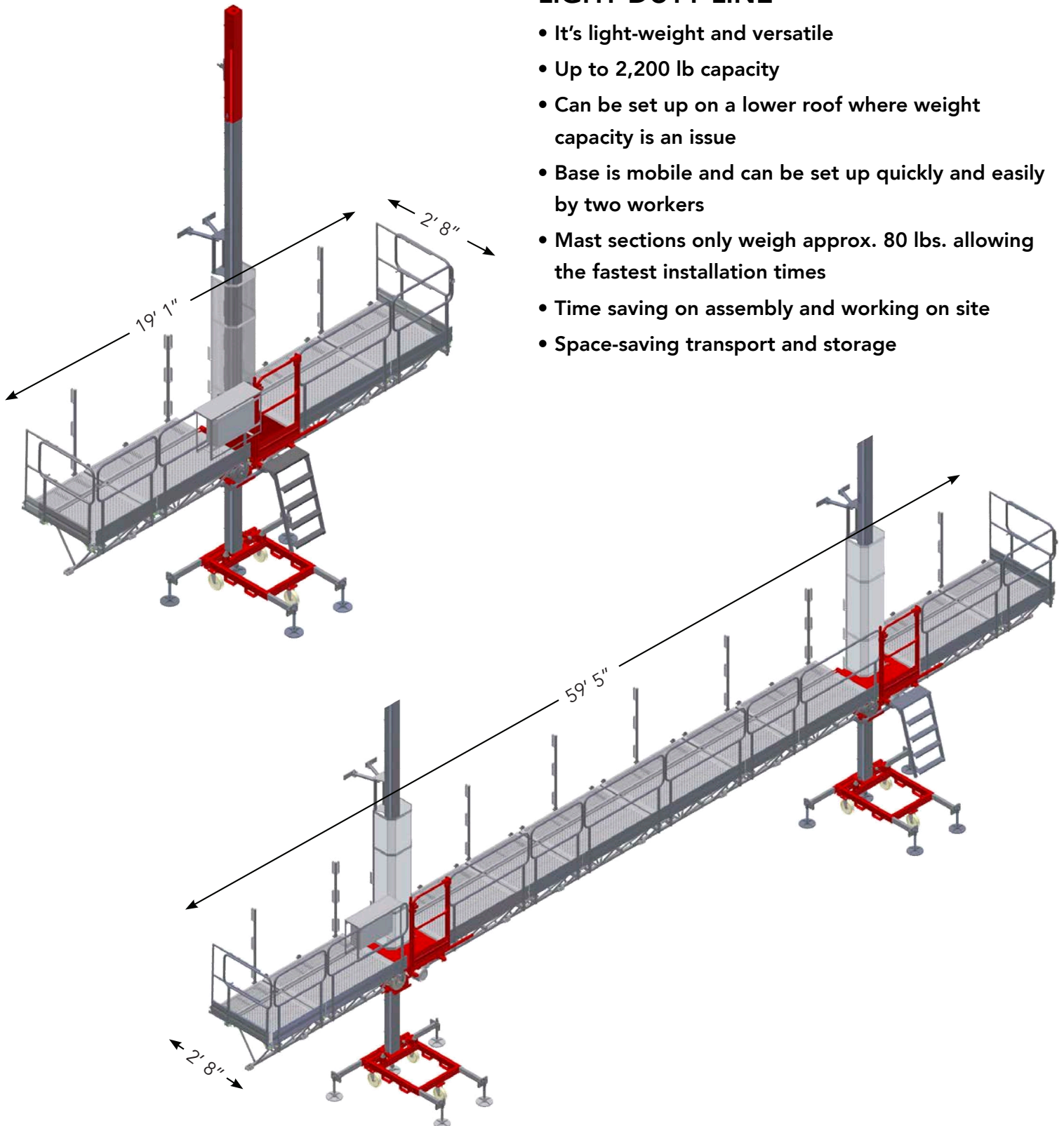


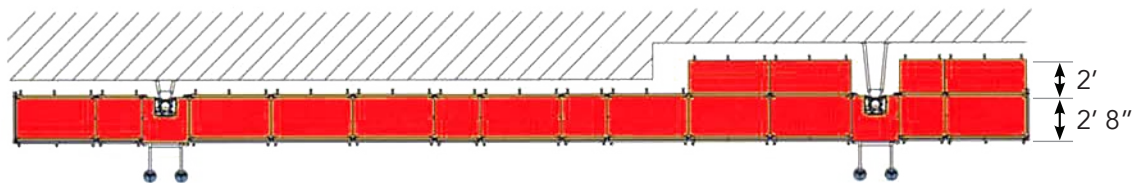
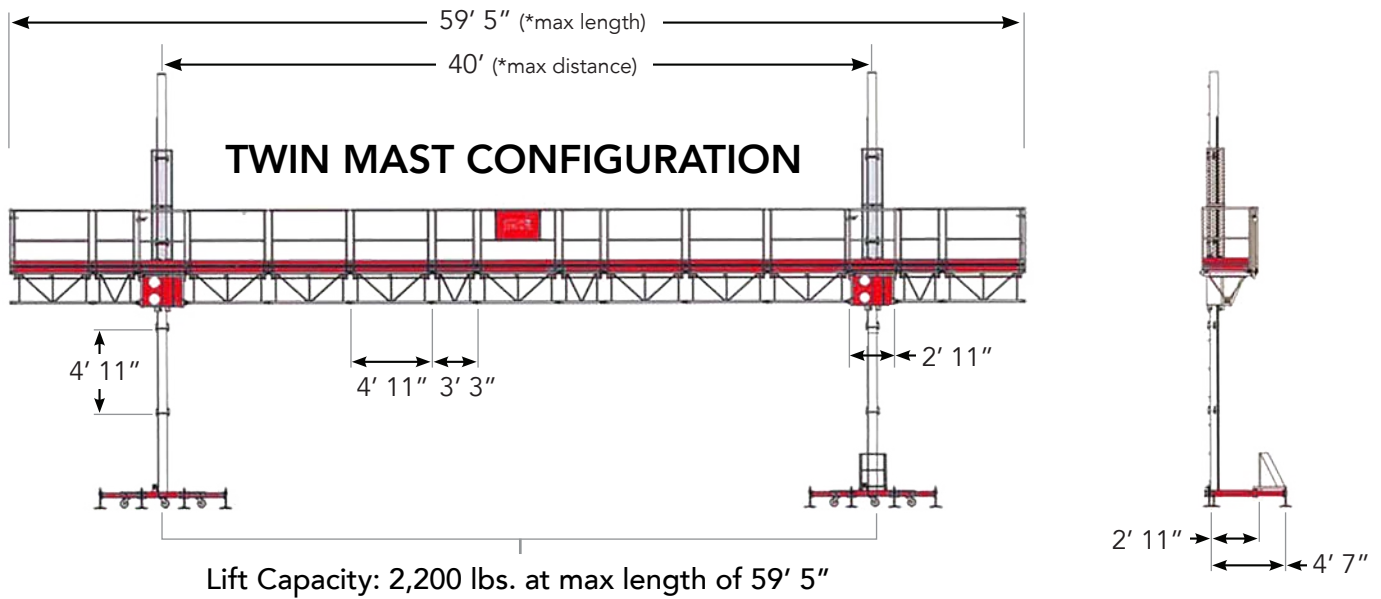
# MAST CLIMBING WORK PLATFORM

## MC-10

### LIGHT DUTY LINE

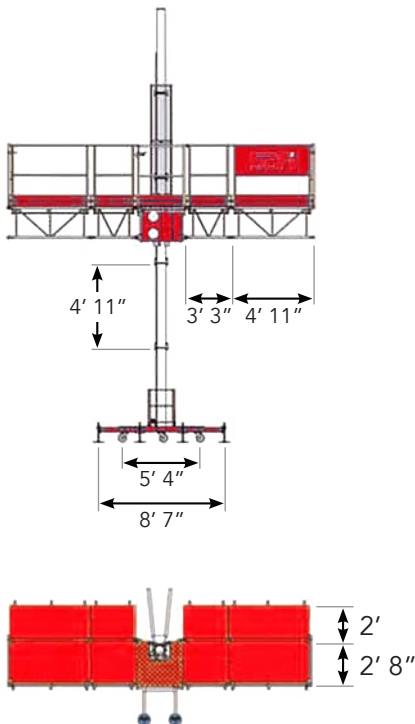
- It's light-weight and versatile
- Up to 2,200 lb capacity
- Can be set up on a lower roof where weight capacity is an issue
- Base is mobile and can be set up quickly and easily by two workers
- Mast sections only weigh approx. 80 lbs. allowing the fastest installation times
- Time saving on assembly and working on site
- Space-saving transport and storage





## SINGLE MAST CONFIGURATION

## SPECIFICATIONS



Available Sizes	Twin Mast	Single Mast
Maximum Height	330'	330'
Maximum Length	59' 5"	19' 1"
Maximum Width	4' 8"	4' 8"
Maximum Payload (Evenly Distributed)	2,200 lbs	1,100 lbs
Maximum Distance Between Mast Towers	40'	-
Distance Between Ties	20'	20'
Base Climber Unit Weight	860 lbs	860 lbs
Mast Section Height	59"	59"
Mast Section Weight	80 lbs	80 lbs
Deck Module Length	59" or 39"	59" or 39"
Deck Module Weight	103 or 77 lbs	103 or 77 lbs
Climbing Speed	20 ft/min	20 ft/min
Power Requirements - 430 VAC $\Phi$ /AMPS	30	30
Drive Motors - 1.5 kW	2	1

\*Illustrations are for representation only and not exact configurations. Consult assembly manual for exact instructions.  
This product must be used in conformity with codes of safe practice and applicable statutes, regulations, codes and ordinances.  
Specification of products and equipment shown herein are subject to change without notice.

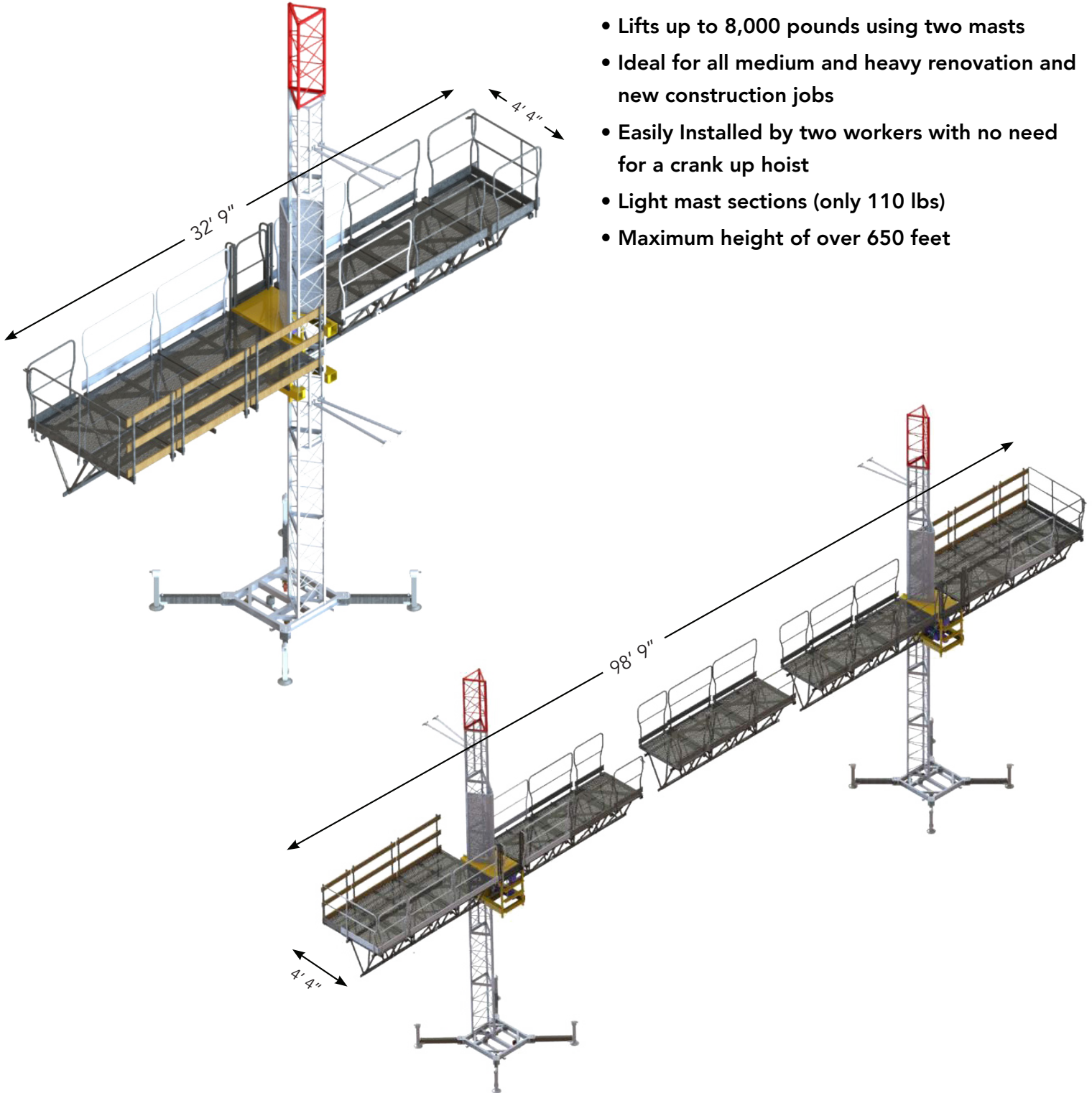


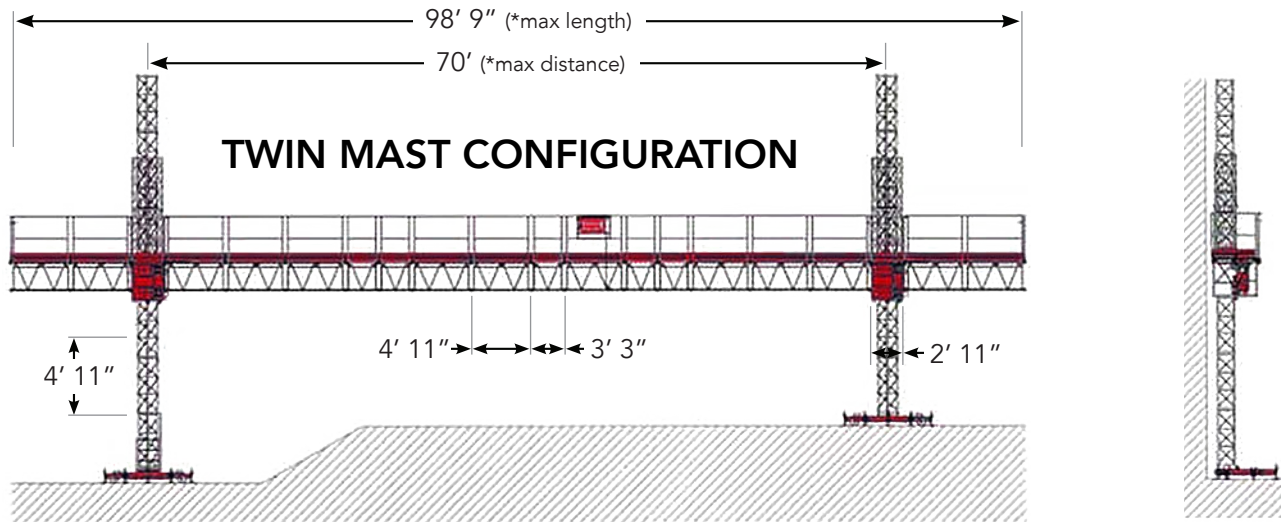
# MAST CLIMBING WORK PLATFORM

## MC-3615

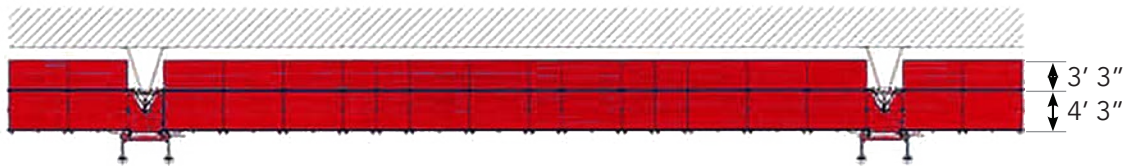
### HEAVY DUTY LINE

- Lifts up to 8,000 pounds using two masts
- Ideal for all medium and heavy renovation and new construction jobs
- Easily Installed by two workers with no need for a crank up hoist
- Light mast sections (only 110 lbs)
- Maximum height of over 650 feet

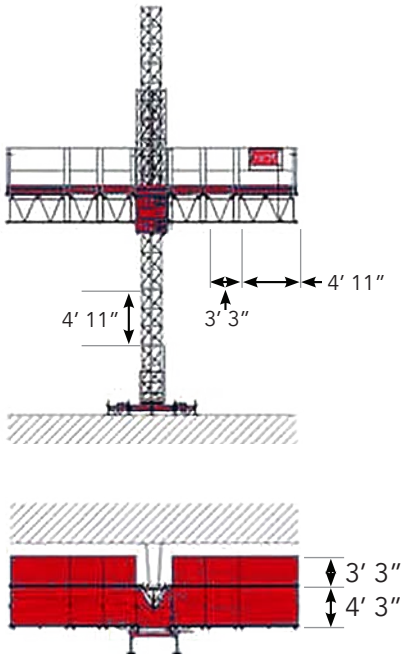




Lift Capacity: 8,000 lbs. at max length of 98' 9"



## SINGLE MAST CONFIGURATION



## SPECIFICATIONS

Available Sizes	Twin Mast	Single Mast
Maximum Height	656'	656'
Maximum Length	98' 9"	32' 9"
Maximum Width	7' 6"	7' 6"
Maximum Payload (Evenly Distributed)	8,000 lbs	3,300 lbs
Maximum Distance Between Mast Towers	70'	-
Distance Between Ties	20'	20'
Base Climber Unit Weight	2,600 lbs	2,600 lbs
Mast Section Height	59"	59"
Mast Section Weight	110 lbs	110 lbs
Deck Module Length	59" or 39"	59" or 39"
Deck Module Weight	224 or 157 lbs	224 or 157 lbs
Climbing Speed	20 ft/min	20 ft/min
Power Requirements - 208 VAC $\Phi$ /AMPS	50	30
Drive Motors - 1.5 kW	4	2

\*Illustrations are for representation only and not exact configurations. Consult assembly manual for exact instructions.  
This product must be used in conformity with codes of safe practice and applicable statutes, regulations, codes and ordinances  
Specification of products and equipment shown herein are subject to change without notice.

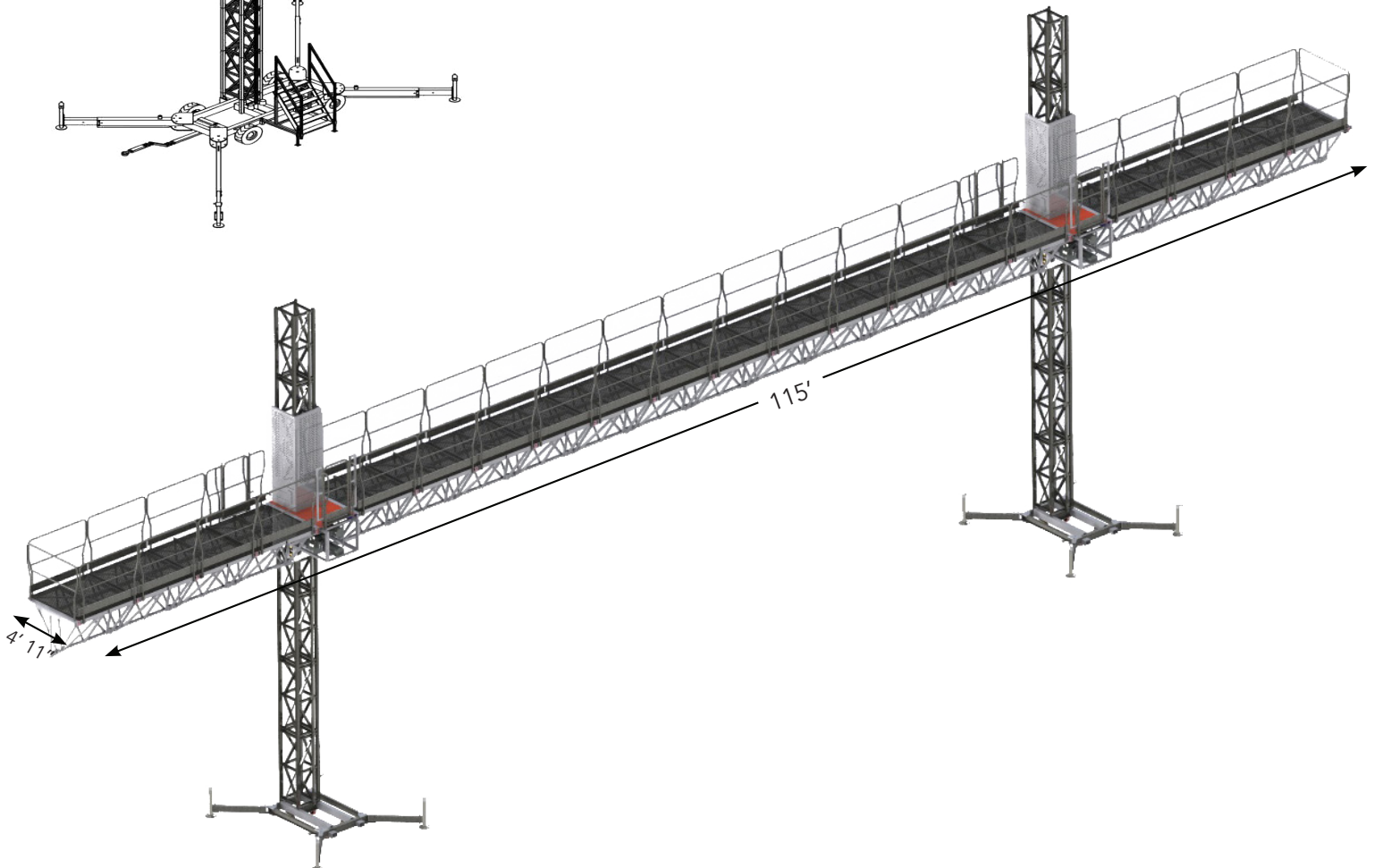
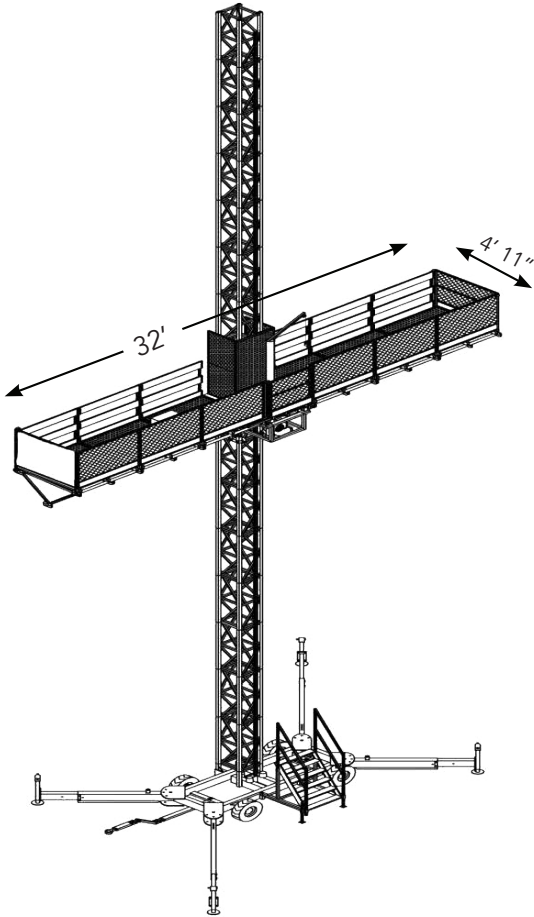


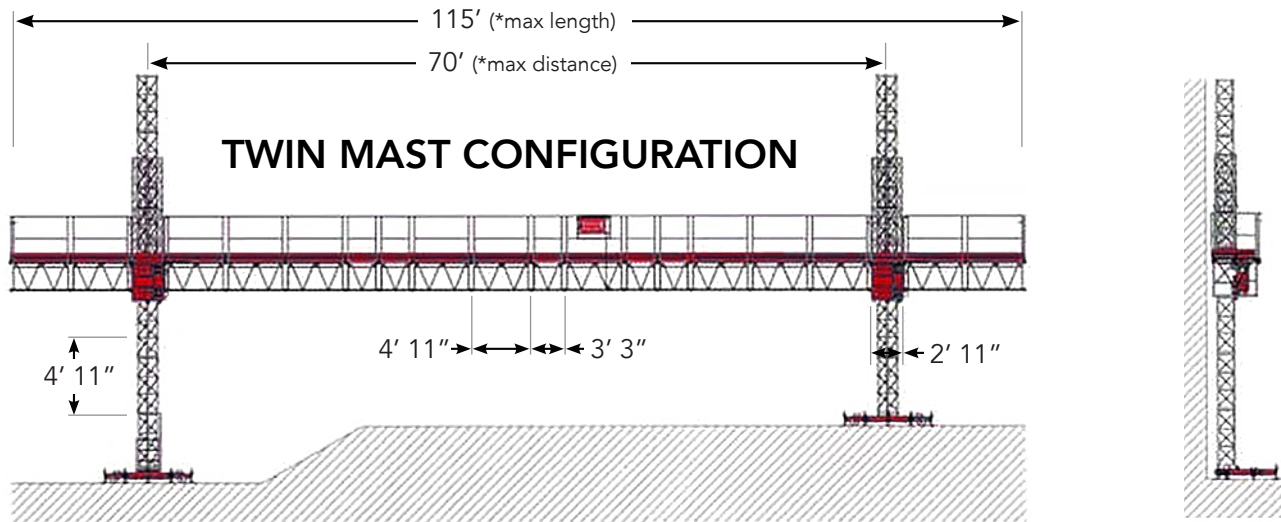
# MAST CLIMBING WORK PLATFORM

## MC-7000

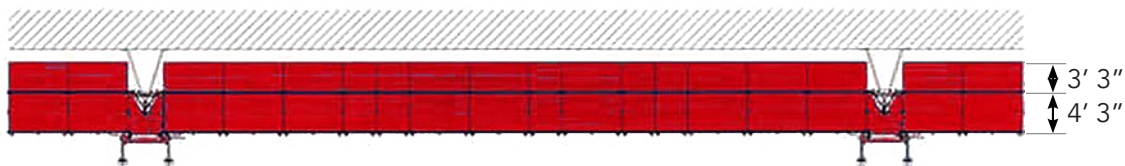
### ULTRA HEAVY DUTY

- One of the largest, fast travel, mast climbing units in the world
- Capable of carrying 7,000 – 12,000 pounds
- Modular design can span up to 115'
- Ideal for heavy renovation and new construction jobs
- Maximum height of 590 feet.
- Lifts at 39 fpm

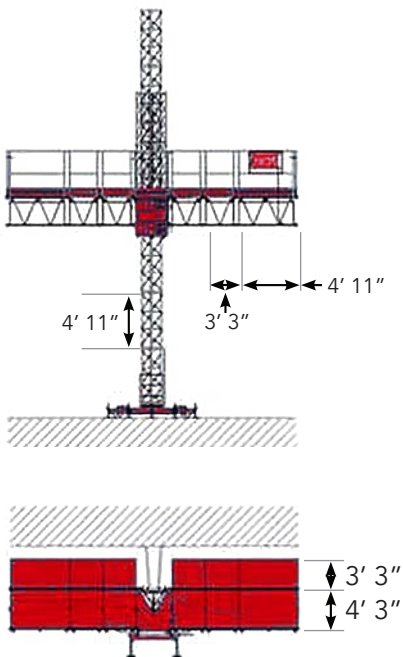




Lift Capacity: 12,000 lbs. at max length of 115'



## SINGLE MAST CONFIGURATION



## SPECIFICATIONS

Available Sizes	Twin Mast	Single Mast
Maximum Height	550'	550'
Maximum Length	115'	52' 5"
Maximum Width	7' 6"	7' 6"
Maximum Payload (Evenly Distributed)	12,125 lbs	6,614 lbs
Maximum Distance Between Mast Towers	70'	-
Distance Between Ties	40'	20'
Base Climber Unit Weight	2,600 lbs	2,600 lbs
Mast Section Height	4' 11"	4' 11"
Mast Section Weight	308 lbs	308 lbs
Deck Module Length	59" or 39"	59" or 39"
Deck Module Weight	224 or 157 lbs	224 or 157 lbs
Climbing Speed	39 ft/min	39 ft/min
Power Requirements - 430 VAC $\Phi$ /AMPS	50	30
Drive Motors - 1.5 kW	4	2

\*Illustrations are for representation only and not exact configurations. Consult assembly manual for exact instructions.  
This product must be used in conformity with codes of safe practice and applicable statutes, regulations, codes and ordinances  
Specification of products and equipment shown herein are subject to change without notice.

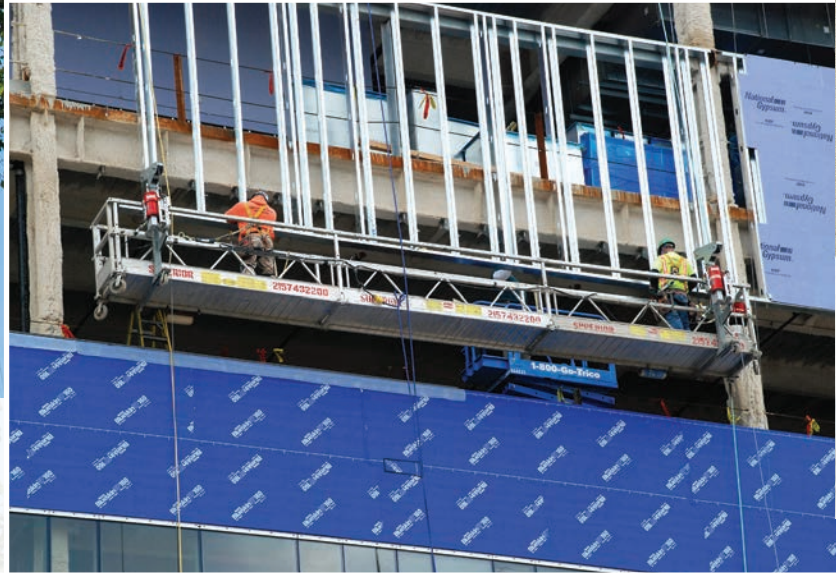


# SUSPENDED SCAFFOLD

## THE SAFEST TOP DOWN ACCESS SOLUTION



Superior's swing stages provide a safe and cost effective method for quick access to buildings, tanks, stacks and other structures.



Designed for specialized tasks such as maintenance, repair, installation, high-rise, silos, industrial applications, stadiums, and much more.

The flexibility allows access to difficult to reach locations.







We provide expert design and installation of suspended work platforms in addition to sales, rentals, and service.



## FEATURES & BENEFITS

**Flexibility:** It's easy to change the length of a standard platform (3' to 72' long). Longer lengths available.

**Capacity:** Modular stages are lightweight with a standard load capacity of up to 1500 lbs.

**Speed:** Suspended scaffold motors provide quick access (35'/min).

**Ease of Assembly:** Modular stages are quick and easy to assemble.

**Manageable:** A 72' modular stage can be transported in a pickup truck!

**Certified:** UL rated scaffold platform.

**Corners:** Fixed or adjustable corner sections can be used to follow the contours of the structure precisely and allow access within 1' to 2' of the working surface.

**Cantilevers:** Walk through stirrups allow a platform to extend past the suspension point

**Stages:** We have standard swings that range from 6' to 60' but can be engineered to any length requirement.

**Options:** There are lots of options from walk-thru and end stirrups to corners, etc.

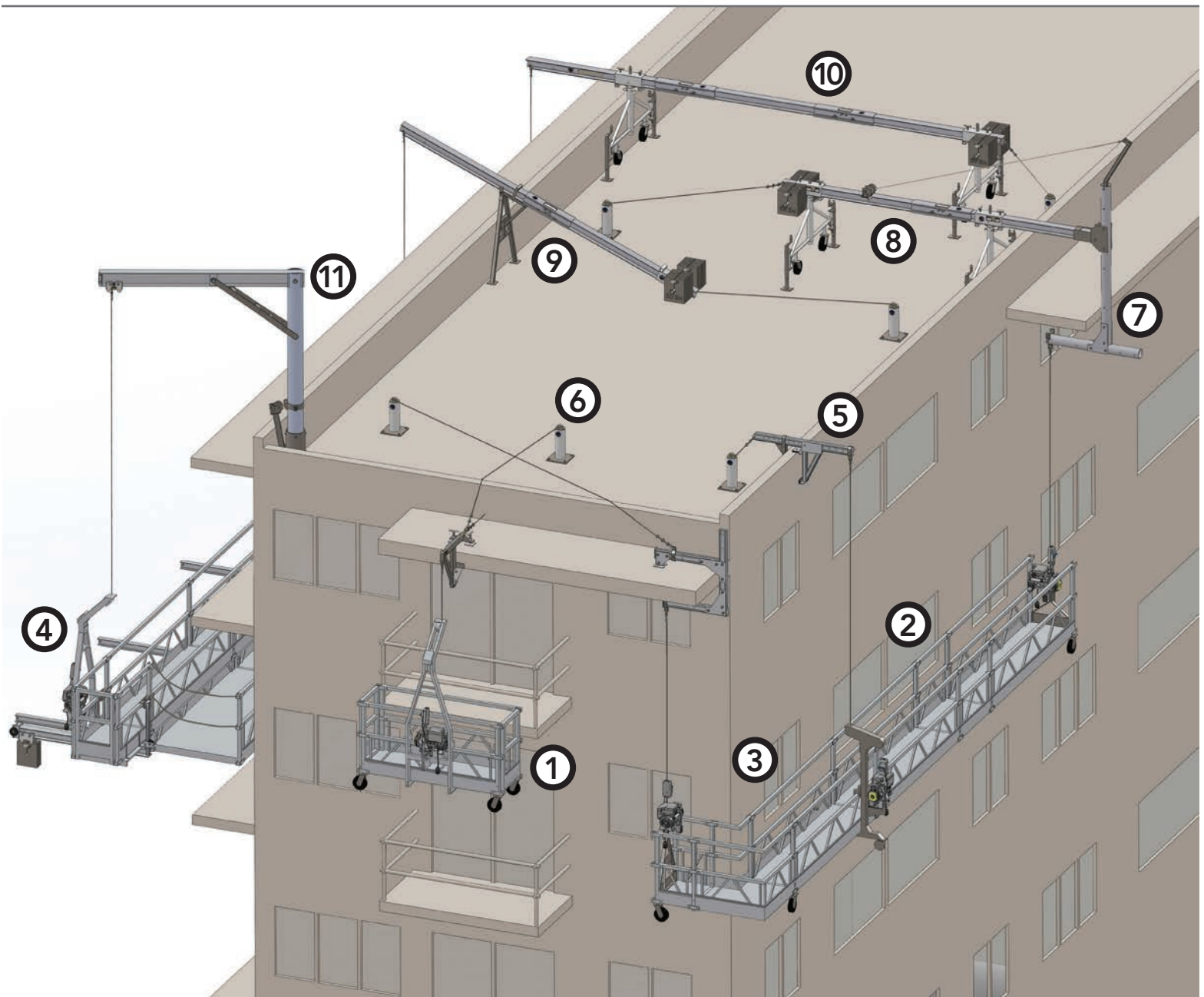
**Support:** Our sales are backed up by unprecedented support. Providing in-house and on-site repair and support.



# SUPERIOR STAGING COMPONENTS

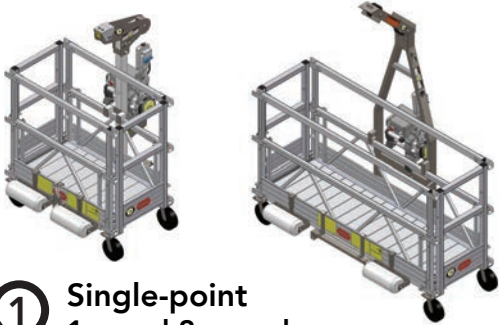
Modular staging allows for greater versatility. Various combinations can be created using the modular platform sections and decks. Superior has stages that range from 6' to 60' depending upon the configuration. The staging can be built to almost any desired length with a variety of mounting options including walk-thru and end stirrups.

**Usage:** When traditional scaffolding is not practical. The flexibility of the system allows for access to locations not normally reachable. Designed for specialized tasks such as maintenance, repair, installation, high-rise, silos, industrial applications, stadiums, and much more.

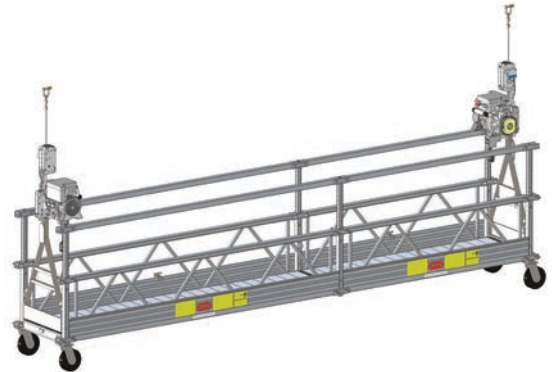


## SUSPENDED (PLATFORMS & RIGGING)

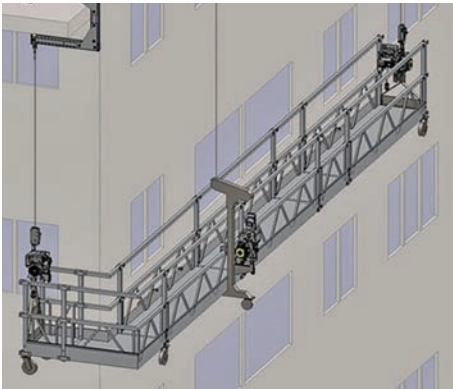
Platforms can be configured in any shape and size to provide safe access to work areas. Angled sections are available to follow the contour of the structure. Platforms can be configured in single-point, two-point and multi-point configurations.



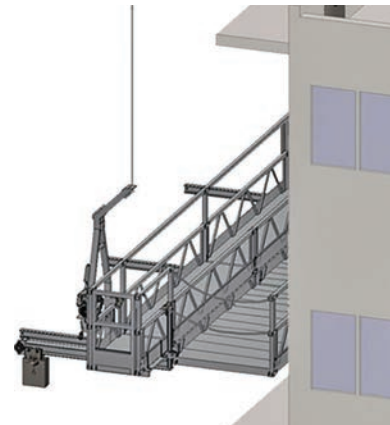
① **Single-point**  
1m and 2m work cages.



② **Two-point**  
Two-point is conventional swing staging and can be up to 62' long.



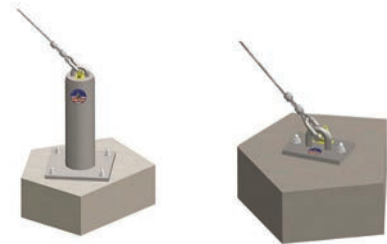
③ **Multi-point**  
Allows for longer platforms, angled platforms to 90 degrees, heavier loads.



④ **Porch**  
Allows for work between and under balconies.



⑤ **Parapet Clamp**  
Parapet clamps and roof hooks are the simplest method of rigging on structural parapets.

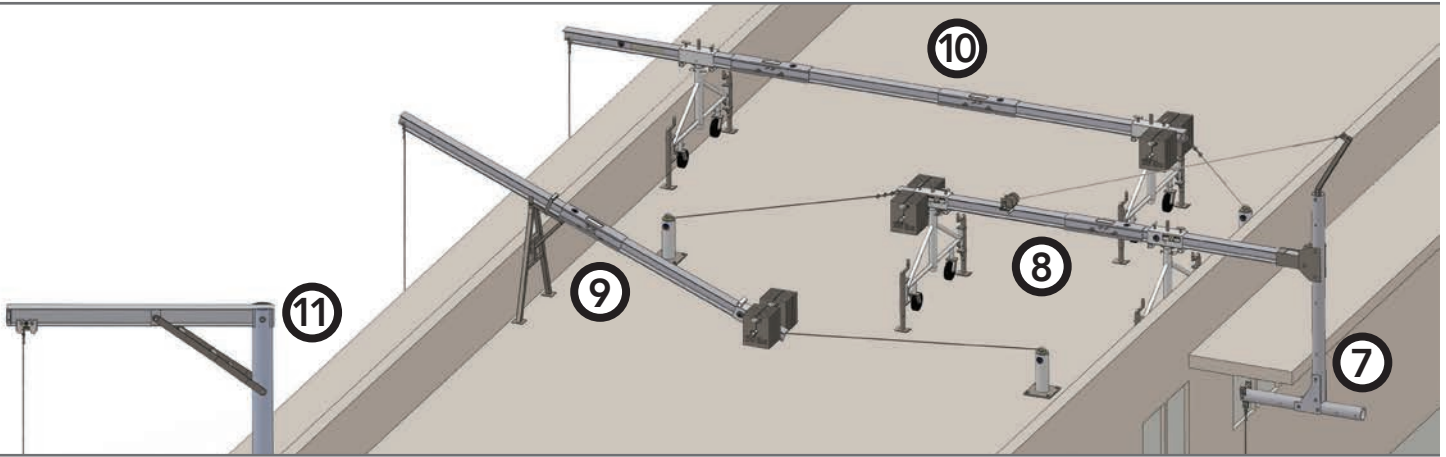


⑥ **Tie Back Anchor**  
Tie back safety line anchors for both permanent and temporary installations.

See page 25 for configuration and specifications



## SUSPENDED (RIGGING)



- 7 Down Under Beam**  
The down-under beam will reach 3' under non structural overhangs like cornices and mansard roofs.



- 8 Standard Outrigger**  
The rolling roof rig (or standard outrigger) allows for the rapid movement of the outriggers to the next drop.



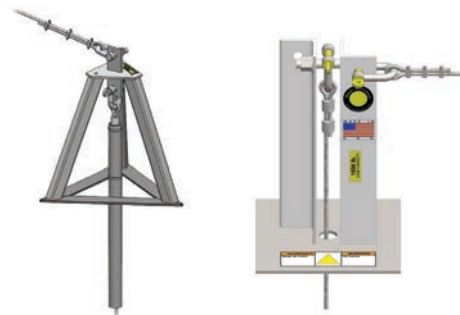
- 9 Tilt Up Beam**  
Tilt up beam stand requires less equipment to be carried to the roof allowing quick set up and lower labor costs for short term jobs like inspections.



- 10 Extended Reach Beam**  
Delivers an increased overhang of up to 11', with the standard having only 2'-3' overhang.



- 11 Davit**  
Permanent installations such as davits are a great rigging solution for those repetitive jobs.



- Tripod Stand & Pigeon Hole Stand**  
Spreads the load over the area allowing to rig through a small opening at the top of vessels, elevator shafts, bridges, structural catwalks, etc.

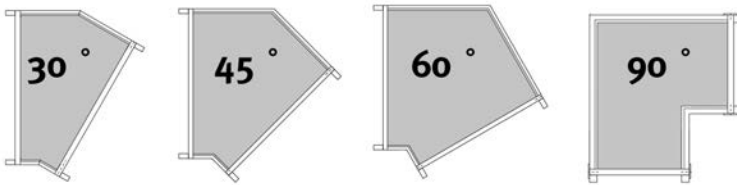
## FIXED AND ADJUSTABLE CORNER SECTIONS

Components can be added in many different configurations depending upon job requirements. It's the most flexible system available! Here are a few popular items.

Corner sections can be used to follow the contours of the structure precisely and allow access within 1' to 2' of the working surface. You can choose from a variety of fixed and adjustable corner sections.

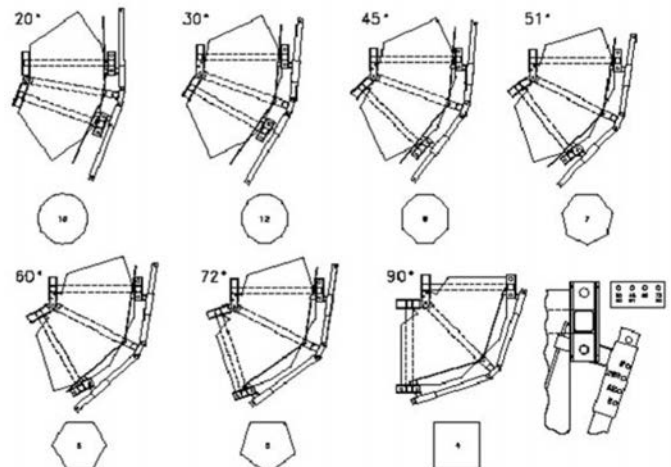
### FIXED CORNERS

- Light weight aluminium construction
- Mounts to the U-frame with Quickpins
- Supplied with guardrails
- Economical solution
- Available in 4 separate angles:  
30°, 45°, 60° and 90°



### ADJUSTABLE CORNERS

- Unique in design and construction
- Makes platform assembly and rigging easier
- Fits together well with the rest of the suspended platform
- Assembly by means of Quickpins
- Can make corner sections of 20, 30, 45, 51, 60, 72 and 90 degrees in order to make easy angle changes!
- Manufactured from anti-corrosive steel combined with aluminum components
- Can be used with a wide variety of platform configurations
- Can be supplied with a spindle for ease of adjustment (option). Finally, this unique adjustable corner section will allow for storage component reduction (cost saving!) compared with fixed corner sections



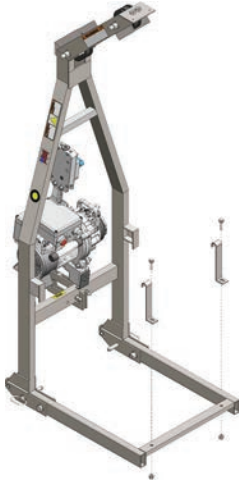


---

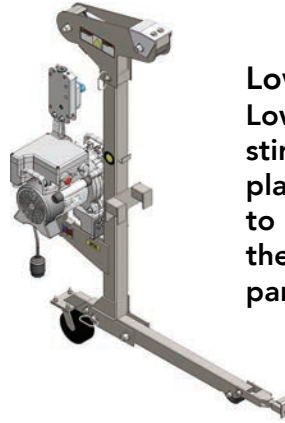
## STIRRUPS

---

Walk thru stirrups place the hoist outboard of the platform allowing workers to walk past the stirrups (attachment point) unencumbered. It also allows the workers to reach beyond the rigging point.



**Walk Thru C-Stirrup**  
The tall gooseneck provides maximum platform stability.



**Low Profile C-Stirrup**  
Low profile walkthrough stirrups allows the platform to get closer to reach work above the rigging, ie: ceilings, parapets, etc.



**End Stirrup**  
Attaches scaffold hoists to the end of an ALTREX platform.



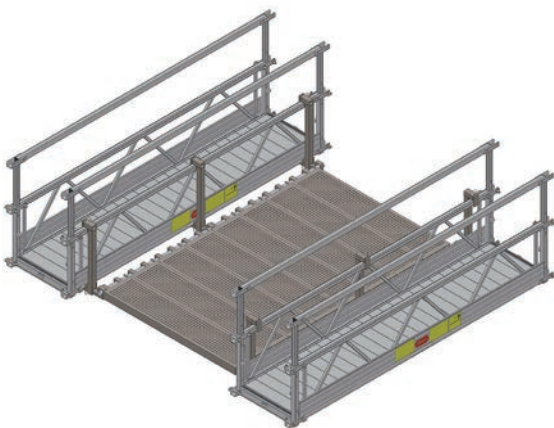
**Double Wide Stirrup**  
For use when combining two side by side platforms.

See page 25 for configuration and specifications

---

## OPTIONS

---



**Dance Floor**  
Allows crews to work on large overhangs, ceilings, under bridges and atrium ceilings while work can continue uninhibited below.



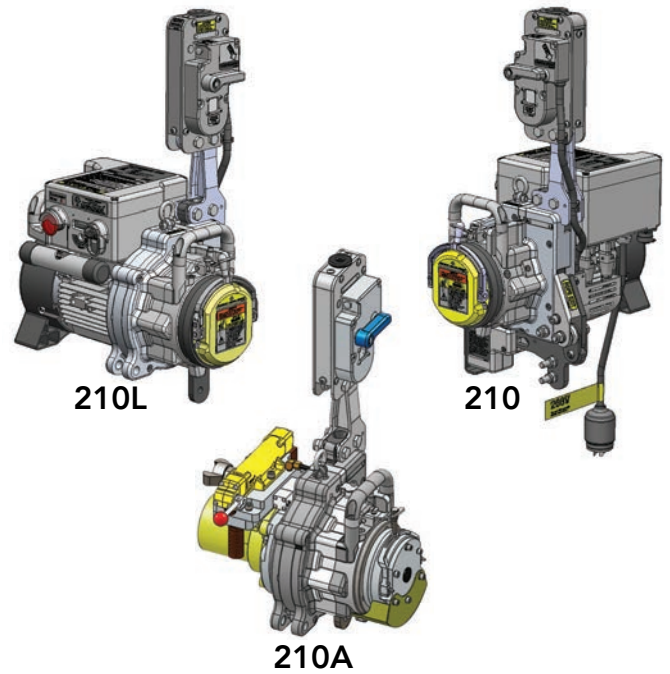
**110V Transformer**  
Safely lowers voltage from 220v to power 110v tools.

## HOISTS - ELECTRIC/AIR

### Bisomac - Bee Access

The BISOMAC210, BISOMAC210L and BISOMAC210A traction hoists are the next-generation traction hoist for the new era of ultra-high-rise buildings. Easy to maintain and highly durable, this full-powered, full-featured traction hoist is remarkably compact and lightweight. The new BISOMAC210A (Air Hoist) has a pneumatic air motor for use where electricity is hard to find, non-existent or there is risk of explosion.

- Tolerant of voltage drops assuring smooth, steady lifting even on very tall buildings
- Easy assembly and disassembly
- Maintenance simplified with easy side cover access
- Fewer parts requiring inspection or replacement
- Well balanced. Two carrying grips for easy handling
- Designed to assure foolproof operation and prevent malfunctions



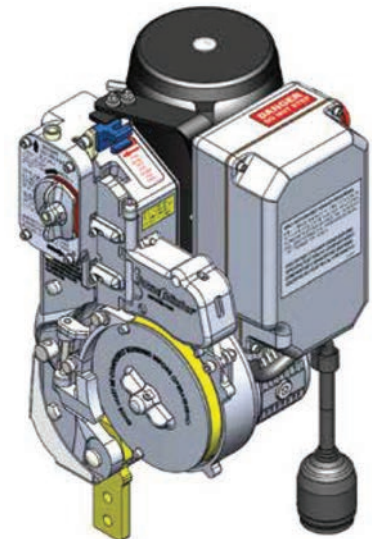
Model	Rate Load	Lifting Speed	Motor	Voltage	Phase	Diameter	Control	Dimensions	Weight
210	1500 lbs*	35 ft/min	1.5 kW	208 V	1-phase, 60Hz	3/8 in.	Independent	24x12x18 in.	128 lbs
210L	1000 lbs	35 ft/min	1.5 kW	208 V	1-phase, 60Hz	5/16 in.	Independent	24x12x18 in.	128 lbs
210A	1000 lbs	35 ft/min	125psi @40CFM	N/A	N/A	5/16 in.	Independent	24x12x18 in.	119 lbs

\* Adjustable capacity up to 1,500 lbs.

### Power Climber

The PC1, useful in primary construction and for overall maintenance of buildings, towers, bridges, dams, ships, power plants, and similar applications, set industry standards for dependability, versatility and serviceability.

- Dependable: Simple design keeps electrical and moving parts to a minimum, ensuring high reliability
- Compact: Fits through a 14 inch opening
- Low maintenance: Modular and open design allows for quick, easy inspection and serviceability
- Self-reeving: End of wire rope smoothly and quickly reeves through the hoist
- Breech loading
- Load-dependent design
- Remote ready
- Built-in overspeed brake
- Built-in secondary wire rope brake
- Voltage indicator



Rate Load	Lifting Speed	Voltage	Circuit Breaker	Current	Dimensions	Weight
1000 lbs	35 ft/min	208 V	20/30 A	7.5 A @ 208 V	13x12x20 in.	102 lbs



# SPECIFICATIONS

## PLATFORMS WITH WALK THRU STIRRUPS

Total Platform Length	Wire Rope Distance	Platform Configuration (in sections ft.)	Total Platform Weight	Rated Working Load	Max # of Sections
30' 9"	23' 3"	10-10-10 ●	847	1000	5
33' 9"	26' 3"	10-7 7-10 ●	884	1000	5
36' 9"	29' 3"	10-7-10-10 ●	924	1000	5
40' 6"	33'	10-10-10-10 ●	994	1000	5
43' 6"	36'	10-10-7-7-10 ●	1034	1000	5
46' 6"	39'	10-10-7-10-10 ●	1071	1000	5
50' 3"	42' 9"	10-10-10-10-10 ●	1144	750	7
53' 3"	45' 9"	10-10-7-7-10-10 ●	1181	750	7
56' 3"	48' 9"	10-10-10-7-10-10 ●	1221	750	7
46' 6"	33'-39'	10-10-7-10-10 ■	1056	750	7
49' 6"	36'-42' 9"	10-10-10-10-10 ■	1096	750	7
52' 3"	36'-45' 9"	10-10-7-7-10-10 ■	1133	750	7
56' 3"	42' 9"-48' 9"	10-10-10-7-10-10 ■	1206	750	7
59' 3"	45' 9"	10-10-10-10-10-10 ◆	1243	750	7
62' 3"	48' 9"	10-10-10-7-7-10-10 ◆	1283	750	7

- 3' 3" cantilevered sections are included in outer 3' sections ◆ 7' cantilevered sections are included in outer 10' sections
- cantilevered sections are included on outer 7' sections and may vary between 3' & 7'

## PLATFORMS WITH END STIRRUPS

Total Platform Length	Platform Configuration (in sections ft.)	Total Platform Weight	Rated Working Load	Max # of Sections
6' 9"	7	847	1000	5
9' 9"	10	884	1000	5
13' 6"	7-7	924	1000	5
16' 6"	10-7	994	1000	5
19' 6"	10-10	1034	1000	5
23' 3"	7-10-7	1071	1000	5
26' 3"	10-7-10	1144	750	7
29' 3"	10-10-10	1181	750	7
33'	10-7-7-10	1221	750	7
36'	10-10-7-10	1056	750	7
39'	10-10-10-10	1096	750	7
42' 9"	10-10-7-7-10	1133	750	7
45' 9"	10-10-7-10-10	1206	750	7
48' 9"	10-10-10-10-10	1243	750	7

- The table is based on the use of 2 hoists
- Please be sure to consult with your supplier for factory approval for any configuration no listed in the table
- The self weight of the platform does not include the weight of the hoists, materials and personnel
- The load must be equally distributed over the length of the platform, with maximum point load of 120 lbs/ft
- Please observe the assembly and operating instruction for use

## ROLLING OUTRIGGER COUNTERWEIGHT REQUIREMENTS

### 16FT CONFIGURATION

Outreach in feet		1.0	1.5	2.0	2.5	3.0	3.5	4.0	4.5	5.0	5.5	6.0
Hoist Rated Capacity	750	5	7	9	12	15	18	22	26	31	36	42
	1000	6	9	12	16	20	24	30	36	42	NA	NA
	1250	7	11	15	20	25	31	38	NA	NA	NA	NA
	1500	9	13	18	24	30	38	NA	NA	NA	NA	NA

NA = Not Allowed

### 24FT CONFIGURATION

Outreach in feet		2.0	2.5	3.0	3.5	4.0	4.5	5.0	5.5	6.0	6.5	7.0	7.5	8.0
Hoist Rated Capacity	750	6	8	9	11	13	15	17	19	21	24	26	30	33
	1000	8	10	12	14	17	20	22	25	29	36	NA	NA	NA
	1250	10	12	15	18	21	24	28	32	36	NA	NA	NA	NA
	1500	12	15	18	22	25	30	34	NA	NA	NA	NA	NA	NA

NA = Not Allowed

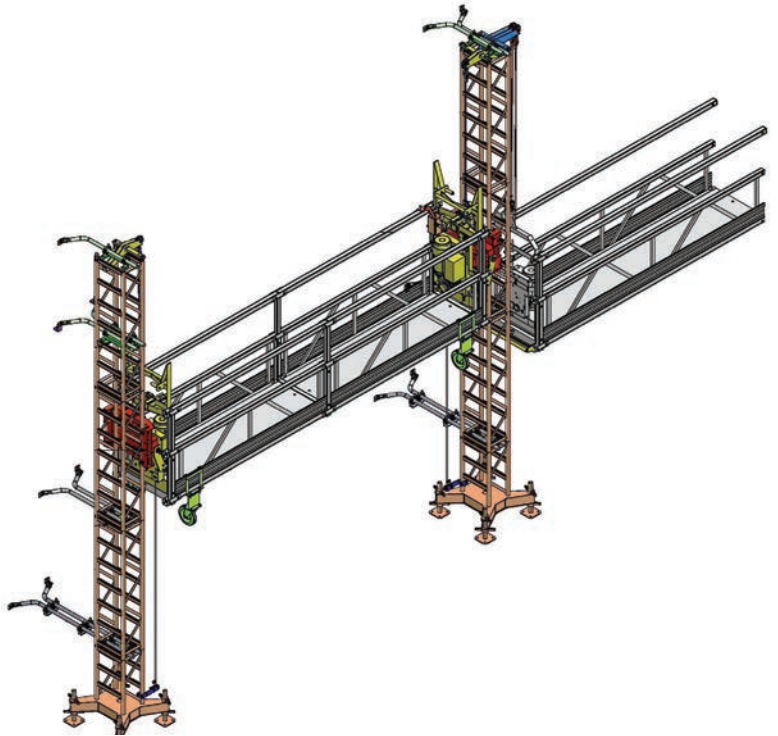
# FIXEO

THE BEST OF BOTH WORLDS



When the roof can't support traditional rigging.

Fixeo components allow you to use conventional swing stages without the requirement of touching the roof. Fixeo doesn't use roof rigging. The strength required for Fixeo wall ties is far less than that of conventional Mast Climbing Work Platforms (MCWP)



When you can't use a MCWP because you don't have the strength required for traditional MCWP wall ties.

Can be set up quickly. In a fraction of the time required for MCWP.



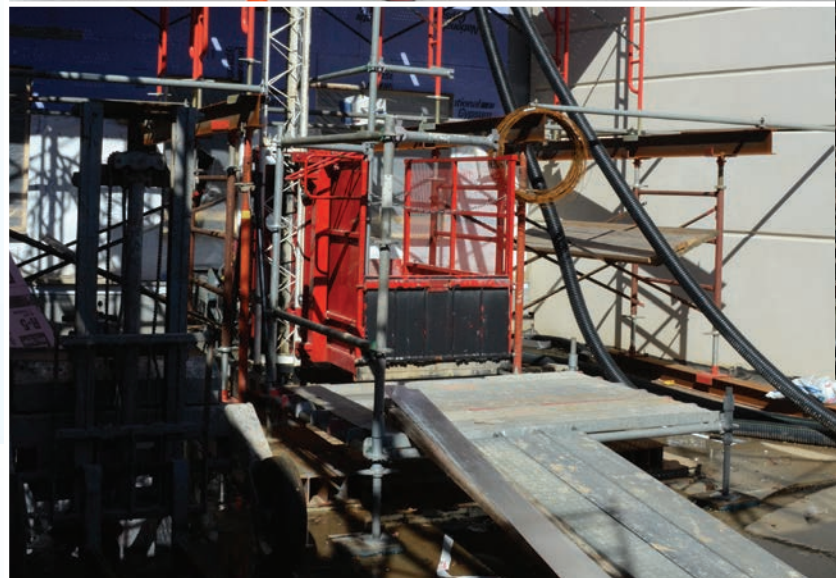


# MATERIAL HOISTS

FOR EVERY TRADE AND PROJECT



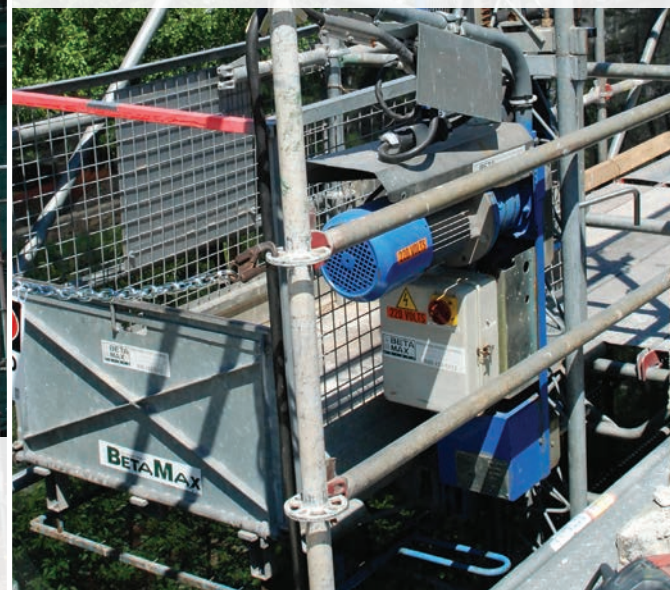
Commonly used in conjunction with scaffolding or roof construction.



Up to 2,000 lb. lifting capability delivers the power needed for many types of projects.



Ideal for scaffolding, demolition, masonry, restoration, stucco, construction, and glazing.







**Safely move materials and tools between levels or laterally.**



## MAXIAL



### Maxial Track Scaffold Hoist

The Maxial Track Scaffold Hoist is the safest, fastest, scaffold delivery system available and is your key to winning the best scaffold projects you bid on this year.

- Safe and simple to use
- Works with frame, system or tube & clamp
- Quick loading and unloading of pipes and frames
- Track builds with you
- Mounts inside or out
- Scaffolding, construction, industrial boiler maintenance

The Maxial Track is designed specifically for the unique demands of scaffold erection. It's flexible enough to work with any modern scaffold system – even has a narrow track option for industrial boiler maintenance. Baskets are built for scaffold which means no delays securing pieces for transport and no falling parts. No separate setups, no additional space or tools required. Simply bring up a piece of Maxial Track with your scaffold and add as needed.



# PATRIOT

## Patriot 1000

HTH portable cable hoists are commonly used in conjunction with scaffolding or roof construction.

- 1,000 Lb. max lifting capacity
- 250 ft. max lifting height
- 30 And 90 fpm dual speed
- 3hp brake motor
- 230v/1p/60hz or 230v/3p/60hz (additional options available)
- 100% duty cycle motor (the motor remains in an active state, ready when you are)
- 1/4" wire rope cable diameter
- Quick & easy cable replacement
- Nema-4 quick disconnect control box
- Variable frequency drive
- 2 Speed pendant control (12' length std)
- Cycloidal speed reducer upper limit travel switch
- Fail safe brake
- 35"L x 12"W x 36"D size
- 215 Lb. unit weight
- Tough powder coat finish options
- Cable assembly: (50', 100', 150', 200', or 250')
- Pendant control: (50', 100', 150', 200', or 250')
- Material use only



## Patriot 2000

Same great functionality with increased capacity.

- 2,000 Lb. max lifting capacity
- 200 Ft. max lifting height
- 16 And 50 fpm dual speed
- 3hp brake motor
- 230v/1p/60hz or 230v/3p/60hz (additional options available)
- 100% duty cycle motor (the motor remains in an active state, ready when you are)
- 5/16" wire rope cable diameter
- Quick & easy cable replacement
- Nema-4 quick disconnect control box
- 2 Speed pendant control (12' length std)
- Cycloidal speed reducer
- Upper limit travel switch
- Fail safe brake
- 35"L x 12"W x 36"D size
- 230 Lb. unit weight
- Tough powder coat finish options
- Cable assembly: (50', 100', 150', or 200')
- Pendant control: (50', 100', 150', or 200')
- Material use only



# LIBERTY

## Liberty RP-2001 Platform Hoist

This 2,000 lbs capacity platform material hoist is used in many fields of construction to easily and safely move materials and tools between levels at a construction site.

- 2,000 Lb. max load capacity\*
- 400 Ft. max vertical travel\*\*
- 70 fpm operating speed\*
- 45"W x 70"L x 48"h clear platform
- 220v / 1p / 60hz / 30a\*
- 100% duty cycle motor (the motor remains in an active state, ready when you are)
- 90° Pivoting platform allows for multiple load configuration
- Fast acting over-speed brake
- Soft-start/soft stop variable frequency drive for smooth acceleration & deceleration
- 5'H tower sections (stackable)
- Anchors to building or scaffolding using standard anchorage brackets or custom made brackets every 10' – 15'
- Heavy steel construction
- Safety chains on access sides
- Drop-down ramps on access sides
- Extendable pendant control
- Base unit weight: 1,440 lbs.
- Water tight connectors



\*Constant voltage is required to prevent damage and to maintain specified lift capacity and speed.

\*\* Consult a structural engineer for heights over 200 ft.





# SUPERIOR

SCAFFOLD SERVICES

# POWERED ACCESS SOLUTIONS



215.743.2200  
[www.superiorscaffold.com](http://www.superiorscaffold.com)  
600 Center Avenue | Bensalem, PA 19020

**SUPERIOR**  
SCAFFOLD SERVICES