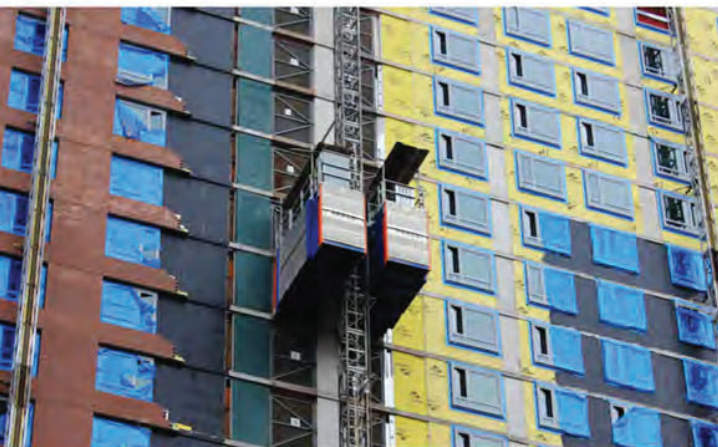


A tall building under construction with a blue FraCo hoist and scaffolding. The hoist is a blue platform with the 'FRA CO' logo and an upward arrow. It is suspended by a metal track and pulley system. The building has multiple floors with windows and is surrounded by scaffolding and safety railings. The sky is clear blue.

SUPERIOR
SCAFFOLD SERVICES

CONSTRUCTION
HOISTS

SH
SERIES



SEH SERIES THE ULTIMATE CONSTRUCTION HOIST



QUALITY AND PERFORMANCE

Fraco SEH Series rack and pinion construction hoists are designed for a safe and efficient transport of personal and material. On request, Fraco can customize car size, speed, payload and finish to adapt to the needs of general contractors, property developers and equipment rental companies.

Mostly used for building construction, SEH Series elevators can also serve for bridge construction and industrial projects. Some models can be used in single or twin cars configuration and can be combined with other Fraco products. Cars are delivered with flexible and adjustable tie systems that can reach top or face of slab. SEH Series are designed to reduce downtime on jobsite. They are built with common electrical and mechanical components easily available from local suppliers. All models are equipped with relay based control system for easier troubleshooting.

A sliding door that allows lateral loading is available as an option with heavy range models.

TECHNICAL DATA

	IMPERIAL	METRIC
STANDARD CAR LENGTH	12 FT 6 IN	3,8 M
AVAILABLE PAYLOADS	4 500 6 000 7 000 8 000 LB	2 040 2 720 3 175 3 640 KG
NUMBER OF PERSONS	UP TO 35	
TRAVEL SPEEDS AVAILABLE (NORMAL MEDIUM HIGH)	130 FT 200 FT 300 FT / MIN	40 M 60 M 90 M / MIN
MAXIMUM HEIGHT	1 310 FT	400 M
STANDARD DISTANCE BETWEEN ANCHORS	30 FT	9 M
LIFTING SYSTEM	RACK AND PINION (MODULE 8)	
TYPE OF ENGINE (POWER SUPPLY)	ELECTRICAL MOTORS (3 PHASE 480V / 60HZ)	
INTERNAL CAR DIMENSIONS (L X W X H) / WEIGHT	12 FT 6 IN X 4 FT 9 IN X 7 FT 2 IN / 7 500 LB	3,8 M X 1,45 M X 2,1 M / 3 400 KG
MAST SECTION DIMENSIONS (L X W X H) / WEIGHT	26 IN X 26 IN X 5 FT / 341 LB	0,65 M X 0,65 M X 1,5 M / 155 KG
TYPE OF OPERATION	CONTROL PANEL WITH PUSH BUTTONS	
STANDARD COMPLIANCE	ANSI A10.4 - 2007; CSA Z185-M87; EN 12159	